

CITY OF WINTER SPRINGS, FLORIDA

WINTER SPRINGS CITY COMMISSION

JOHN F. BUSH, MAYOR
 JEAN HOVEY
 RICK BROWN
 GARY BONNER
 SALLY MCGINNIS
 JOANNE M. KREBS
 KEVIN SMITH, ACTING CITY MANAGER
 ANTHONY A. GARGANESE, CITY ATTORNEY

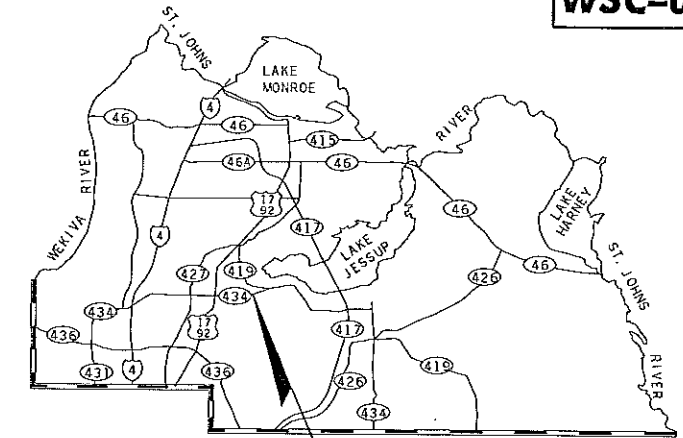
PUBLIC WORKS/UTILITY DIRECTOR
 KIPTON LOCKCUFF, P.E.



CITY ENGINEER
 BRIAN FIELDS, P.E.

CONSTRUCTION PLANS FOR INTERSECTION IMPROVEMENTS AT SR 434 AND HAYES ROAD

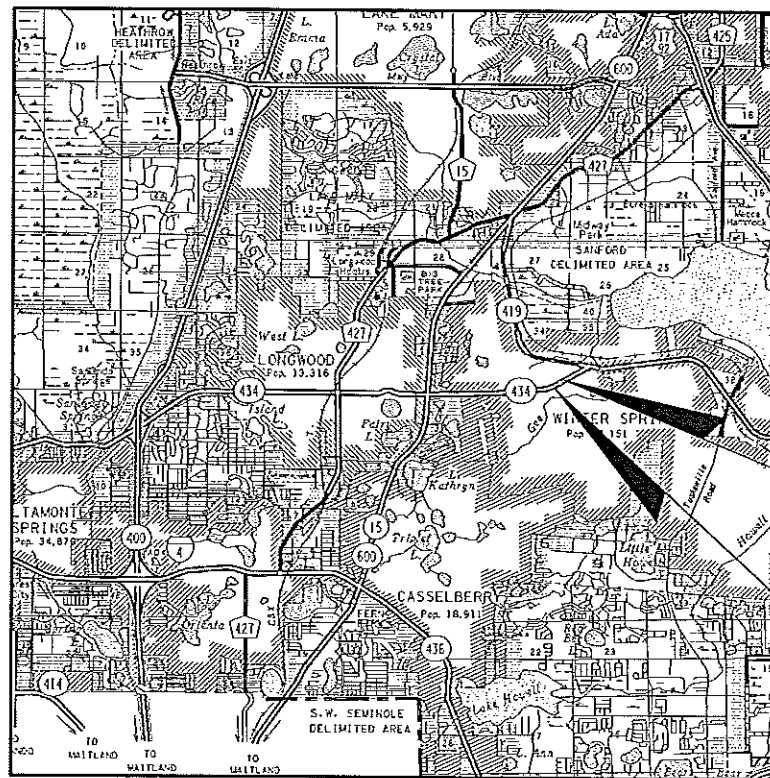
PROJECT NUMBER
WSC-006-2



LOCATION OF PROJECT

INDEX OF ROADWAY PLANS


SHEET NO.	SHEET DESCRIPTION
1	KEY SHEET
2	GENERAL NOTES AND QUANTITIES
3	TYPICAL SECTIONS
4-5	PLAN SHEETS
6-7	SOIL SURVEY SHEETS
8-9	ROADWAY CROSS SECTIONS
10-11	UTILITY ADJUSTMENT SHEETS
12	SIGNING & PAVEMENT MARKING PLAN
13-15	SIGNALIZATION PLANS



END PROJECT
 HAYES ROAD
 STA. 174+40.00

BEGIN PROJECT
 HAYES ROAD
 STA. 171+25.00

ROADWAY SHOP DRAWINGS
 TO BE SUBMITTED TO:
 FURSAN S. MUNJED, P.E.
 PEGASUS ENGINEERING LLC.
 301 WEST STATE ROAD 434
 SUITE 309
 WINTER SPRINGS, FLORIDA 32708
 PHONE 407-992-9160

PLANS PREPARED BY:

 PEGASUS ENGINEERING, LLC
 301 WEST STATE ROAD 434
 SUITE 309
 WINTER SPRINGS, FL 32708
 407-992-9160
 CERTIFICATE OF AUTHORIZATION NO. 27770

NOTE: THE SCALE OF THESE PLANS MAY
 HAVE CHANGED DUE TO REPRODUCTION.

**100% SUBMITTAL
 MARCH 2, 2009**

GOVERNING STANDARDS AND SPECIFICATIONS:
 FLORIDA DEPARTMENT OF TRANSPORTATION,
 DESIGN STANDARDS DATED JANUARY 2008,
 AND STANDARD SPECIFICATIONS FOR ROAD AND
 BRIDGE CONSTRUCTION DATED 2007,
 AS AMENDED BY CONTRACT DOCUMENTS.

APPLICABLE DESIGN STANDARDS MODIFICATIONS: 1-1-09

For Design Standards Modifications click on
 "Design Standards" at the following web site:
<http://www.dot.state.fl.us/rddesign>

REVISIONS

LENGTH OF PROJECT		
	LINEAR FEET	MILES
ROADWAY	315.00	0.060
BRIDGES	0.00	0.000
NET LENGTH OF PROJECT	315.00	0.060
EXCEPTIONS	0.00	0.000
GROSS LENGTH OF PROJECT	315.00	0.060

KEY SHEET REVISIONS		
DATE	BY	DESCRIPTION

ROADWAY PLANS
 ENGINEER OF RECORD: FURSAN S. MUNJED, P.E.

P.E. NO. 51446

SHEET NO.
1



GENERAL NOTES

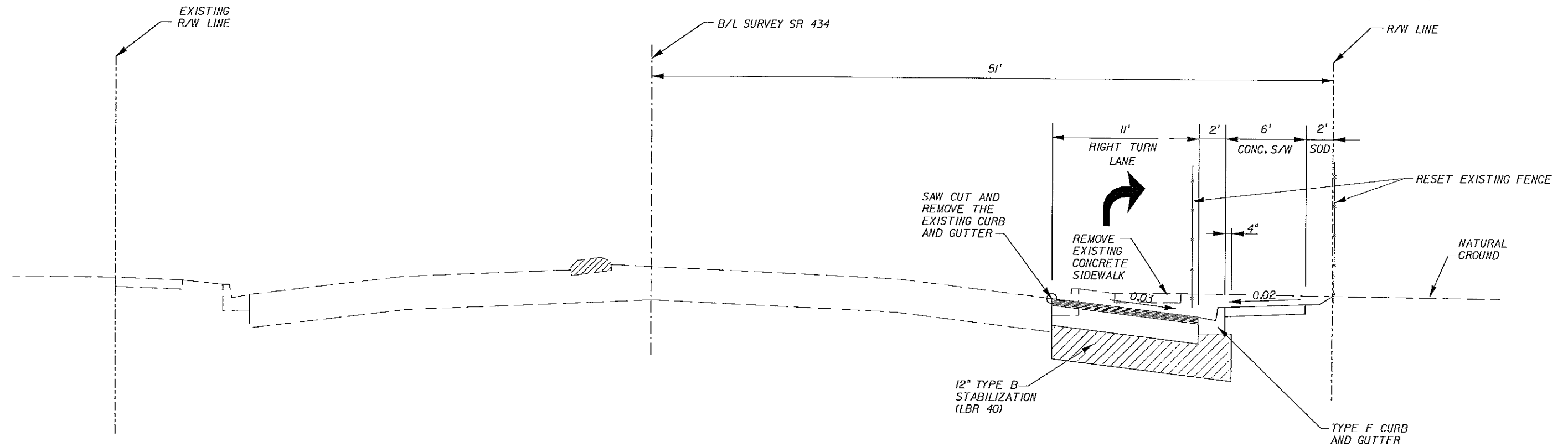
- AT TIME OF FINAL INSPECTION THE CONTRACTOR SHALL FURNISH THE CITY OF WINTER SPRINGS TWO SETS OF AS-BUILT PLANS.
- THE CONTRACTOR SHALL NOTIFY ALL UTILITIES AT LEAST 48 HOURS IN ADVANCE OF ANY OPERATION THAT MAY CONFLICT WITH OVERHEAD OR UNDERGROUND UTILITIES. THE CONTRACTOR SHALL BE RESPONSIBLE FOR LOCATING AND COORDINATING THE RELOCATION OF ALL UTILITIES PRIOR TO CONSTRUCTION.
- IT SHALL BE THE CONTRACTORS RESPONSIBILITY TO EXAMINE THE JOB SITE CONDITIONS BEFORE SUBMITTING BID PROPOSALS.
- LANE CLOSURES WILL BE PERMITTED ONLY DURING ACTIVE WORK PERIODS WHEN THE LANE CLOSURE IS NEEDED TO ACCOMPLISH THE WORK. NO LONG TERM LANE CLOSURES WILL BE PERMITTED. LANE CLOSURES WILL BE PERMITTED BETWEEN 9:00 AM AND 4:00 PM (MONDAY THRU FRIDAY). NO LANE CLOSURES WILL BE PERMITTED DURING WEEKENDS.
- THE CONTRACTOR SHALL ADHERE TO THE FDOT ROADWAY AND TRAFFIC DESIGN STANDARDS, DATED 2008, INDEX 600 SERIES AND THE FDOT STANDARD SPECIFICATIONS FOR ROAD AND BRIDGE CONSTRUCTION, DATED 2007 INCLUDING ALL SUPPLEMENTS AND REVISIONS THERETO.
- ALL MATERIALS, CONSTRUCTION METHODS, CONSTRUCTION INSPECTIONS, AND TESTING FOR THE PROJECT IMPROVEMENTS SHALL BE IN ACCORDANCE WITH THE FDOT SPECIFICATIONS FOR ROAD AND BRIDGE CONSTRUCTION INCLUDING ALL REVISIONS AND SUPPLEMENTS THERETO MOST RECENT EDITIONS.
- THE UTILITY LOCATIONS SHOWN IN PLANS ARE BASED ON INFORMATION PROVIDED BY THE UTILITY COMPANIES, PRIOR TO START OF CONSTRUCTION. THE CONTRACTOR SHALL COORDINATE WITH THE VARIOUS UTILITIES TO FIELD VERIFY THE LOCATION OF ALL EXISTING UTILITIES WHICH MAY INTERFERE WITH THE PROPOSED WORK. RELOCATION OR EXTENSION OF EXISTING UTILITIES SHALL BE COORDINATED BY THE CONTRACTOR.
- EXISTING DRAINAGE STRUCTURES SHOWN ARE NOT TO BE DISTURBED UNLESS OTHERWISE NOTED.
- THE CONTRACTOR SHALL MATCH EXISTING SOD TYPE IN AREAS TO BE SODDED. ALL COSTS REQUIRED FOR THE ESTABLISHMENT OF SODDING, INCLUDING FERTILIZER AND WATER, ARE TO BE INCLUDED WITH PAY ITEM 575-1.
- THE CONTRACTOR SHALL RELOCATE THE MAILBOXES AS PER FDOT DESIGN STANDARDS, INDEX 532.

UTILITY OWNERS

1. FLORIDA PUBLIC UTILITIES (GAS)	DAN SCRIBBEN	386-668-9319
2. BRIGHTHOUSE NETWORKS	MARVIN L. USRY, JR.	407-532-8509
3. EMBARQ	JEFF GRIFFIN	407-814-5344
4. PROGRESS ENERGY FLORIDA, INC. (DISTRIBUTION)	SHARON DEAR	407-942-9709
5. PROGRESS ENERGY FLORIDA, INC. (TRANSMISSION)	KAIYA HALL	407-942-9243
6. SEMINOLE COUNTY TRAFFIC ENGINEERING	CHARLES WETZEL	407-665-5686
7. CITY OF WINTER SPRINGS	BRIAN FIELDS	407-327-7597
8. LEVEL 3 COMMUNICATIONS, LLC	TODD MORT	813-349-1477
9. AT&T FLORIDA	JAMES FERRELL	407-273-5084

SUMMARY OF PAY ITEMS				
BID ITEM NO.	DESCRIPTION	UNIT	ORIG.	FINAL
ROADWAY PAY ITEMS				
101- 1	MOBILIZATION	LS	1	
102- 1	MAINTENANCE OF TRAFFIC	LS	1	
110- 1- 1	CLEARING & GRUBBING (INCLUDES SAW CUTTING OF PAVEMENT AND REMOVAL OF EXISTING CONCRETE)	LS	1	
120- 99	EARTHWORK AND GRADING	LS	1	
160- 4	TYPE B STABILIZATION	SY	500	
285-712	BASE GROUP 12 (TYPE B-12.5 ONLY)	SY	400	
334-1-13	SUPERPAVE ASPHALTIC CONCRETE (TRAFFIC C) (3.0") (330 LBS/SY)	TN	70	
337-7-6	ASPH. CONC. FRICTION COURSE (INC. BIT) (RUBBER) (FC-12.5) (1.5")	TN	35	
520-1-10	CONCRETE CURB AND GUTTER (TYPE F)	LF	340	
522-1	CONCRETE SIDEWALK (4" THICK)	SY	240	
999-1	RESET EXISTING FENCE	LF	320	
575- 1	SODDING	SY	150	
DRAINAGE PAY ITEMS				
425-1-351	CURB INLET (TYPE P-5) (10') (S-2 AND S-4)	EA	2	
425-11	MODIFY EXISTING DRAINAGE STRUCTURE (S-1 AND S-3)	EA	2	
430-171-123	CONCRETE PIPE CULVERT OPTIONAL MAT'L (STORM SEWER) (15" ROUND)	LF	22	
SIGNING AND PAVEMENT MARKINGS PAY ITEMS				
702-7	REMOVE EXISTING PAVEMENT MARKINGS	SF	250	
706-3	RETRO REFLECTIVE PAVEMENT MARKERS	EA	10	
711-4	DIRECTIONAL ARROWS THERMOPLASTIC	EA	3	
711-33	SKIP TRAFFIC STRIPE (6" WHITE) THERMOPLASTIC (6-10')	LF	30	
711-35-61	SOLID TRAFFIC STRIPE (6" WHITE) THERMOPLASTIC	LF	340	
711-35-121	SOLID TRAFFIC STRIPE (12" WHITE) THERMOPLASTIC (CROSS WALK)	LF	185	
711-35-241	SOLID TRAFFIC STRIPE (24" WHITE) THERMOPLASTIC (STOP BAR)	LF	26	
903-527-1	APPLIED DETECTABLE WARNING DEVICE ON CURB RAMPS	EA	1	
SIGNALIZATION PAY ITEMS				
630-1-11	CONDUIT (F&I) (ABOVEGROUND)	LF	25	
630-1-12	CONDUIT (F&I) (UNDERGROUND)	LF	450	
630-1-14	CONDUIT (F&I) (DIRECTIONAL BORE)	LF	230	
632-7-1	SIGNAL CABLE (F&I)	PI	1	
633-313-2	FIBER OPTIC CABLE (RELOCATE)	LF	400	
635-1-11	PULL AND JUNCTION BOXES (F&I) (PULL BOX)	EA	3	
635-1-15	PULL AND JUNCTION BOXES (F&I) (FIBER OPTIC)	EA	1	
649-940	MAST ARM ASSEMBLY (RELOCATE)	AS	1	
649-999	MAST ARM FOUNDATION (F&I)	LF	12	
653-381	SIGNAL, PEDESTRIAN (RELOCATE) (LED) (1WAY)	AS	1	
659-108	SIGNAL HEAD AUXILIARIES (F&I) (STEEL PEDESTAL)	EA	1	
660-2-102	LOOP ASSEMBLY TYPE B (F&I)	AS	4	
660-2-106	LOOP ASSEMBLY TYPE F (F&I)	AS	1	
665-11	PEDESTRIAN DETECTOR (F&I)	EA	1	
690-32-2	REMOVE POLE (SHALLON) (BOLT ON ATTACHEMENT)	EA	1	
690-70	REMOVE PEDESTRIAN DETECTOR ASSEMBLY	EA	1	
690-90	REMOVE CONDUIT & CABLING	PI	1	
690-100	REMOVE MISC. SIGNAL EQUIPMENT	PI	1	

REVISIONS			ENGINEER OF RECORD: FURSAN S. MUNJED, P.E. PROFESSIONAL ENGINEER CERTIFICATE NO. 51446 PEGASUS ENGINEERING, LLC. 301 WEST STATE ROAD 434, SUITE 309 WINTER SPRINGS, FLORIDA 32708 CERTIFICATE OF AUTHORIZATION NO. 27770		CITY OF WINTER SPRINGS FLORIDA			SR 434 AND HAYES ROAD INTERSECTION IMPROVEMENTS GENERAL NOTES AND QUANTITIES	SHEET NO. 2
DATE	BY	DESCRIPTION			ROAD NO.	PROJECT NO.			
					SR 434	WSC-006-2			



TYPICAL SECTION

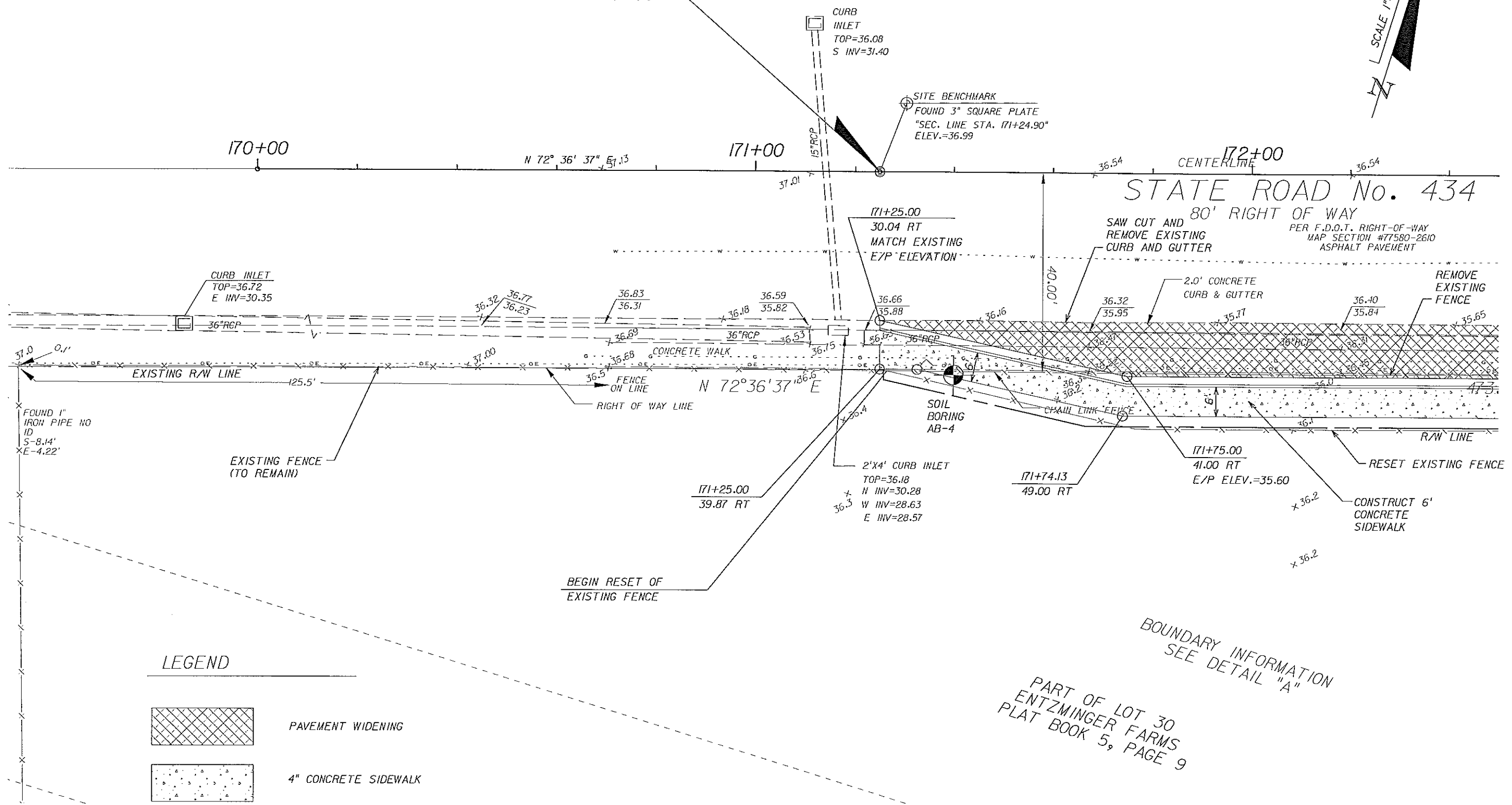
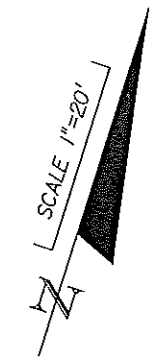
SR 434 AT HAYES ROAD
 STA. 171+25.00 TO STA. 174+40.00

PAVEMENT WIDENING


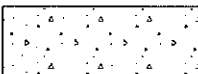
OPTIONAL BASE GROUP 12 (TYPE B-12.5 ONLY) WITH
 SUPERPAVE ASPHALTIC CONCRETE (3") (330 LBS/SY)
 AND FRICTION COURSE FC-12.5 (1.5") (165 LBS/SY) (RUBBER)
 TRAFFIC LEVEL C

REVISIONS		ENGINEER OF RECORD: FURSAN S. MUNJED, P.E. PROFESSIONAL ENGINEER CERTIFICATE NO. 51446 PEGASUS ENGINEERING, LLC. 301 WEST STATE ROAD 434, SUITE 309 WINTER SPRINGS, FLORIDA 32708 CERTIFICATE OF AUTHORIZATION NO. 27770	CITY OF WINTER SPRINGS FLORIDA	CITY OF WINTER SPRINGS FLORIDA		Pegasus ENGINEERING	SR 434 AND HAYES ROAD INTERSECTION IMPROVEMENTS TYPICAL SECTIONS	SHEET NO. 3
DATE	BY			ROAD NO.	PROJECT NO.			
				SR 434	WSC-006-2			

BEGIN PROJECT
STA. 171+25.00



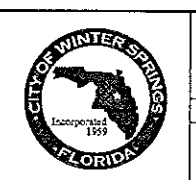
LEGEND

-  PAVEMENT WIDENING
-  4" CONCRETE SIDEWALK

BOUNDARY INFORMATION
SEE DETAIL "A"
PART OF LOT 30
ENTZINGER FARMS
PLAT BOOK 5, PAGE 9

REVISIONS		
DATE	BY	DESCRIPTION

ENGINEER OF RECORD:
FURSAN S. MUNJED, P.E.
PROFESSIONAL ENGINEER CERTIFICATE NO. 51446
PEGASUS ENGINEERING, LLC.
301 WEST STATE ROAD 434, SUITE 309
WINTER SPRINGS, FLORIDA 32708
CERTIFICATE OF AUTHORIZATION NO. 27770



CITY OF WINTER SPRINGS
FLORIDA

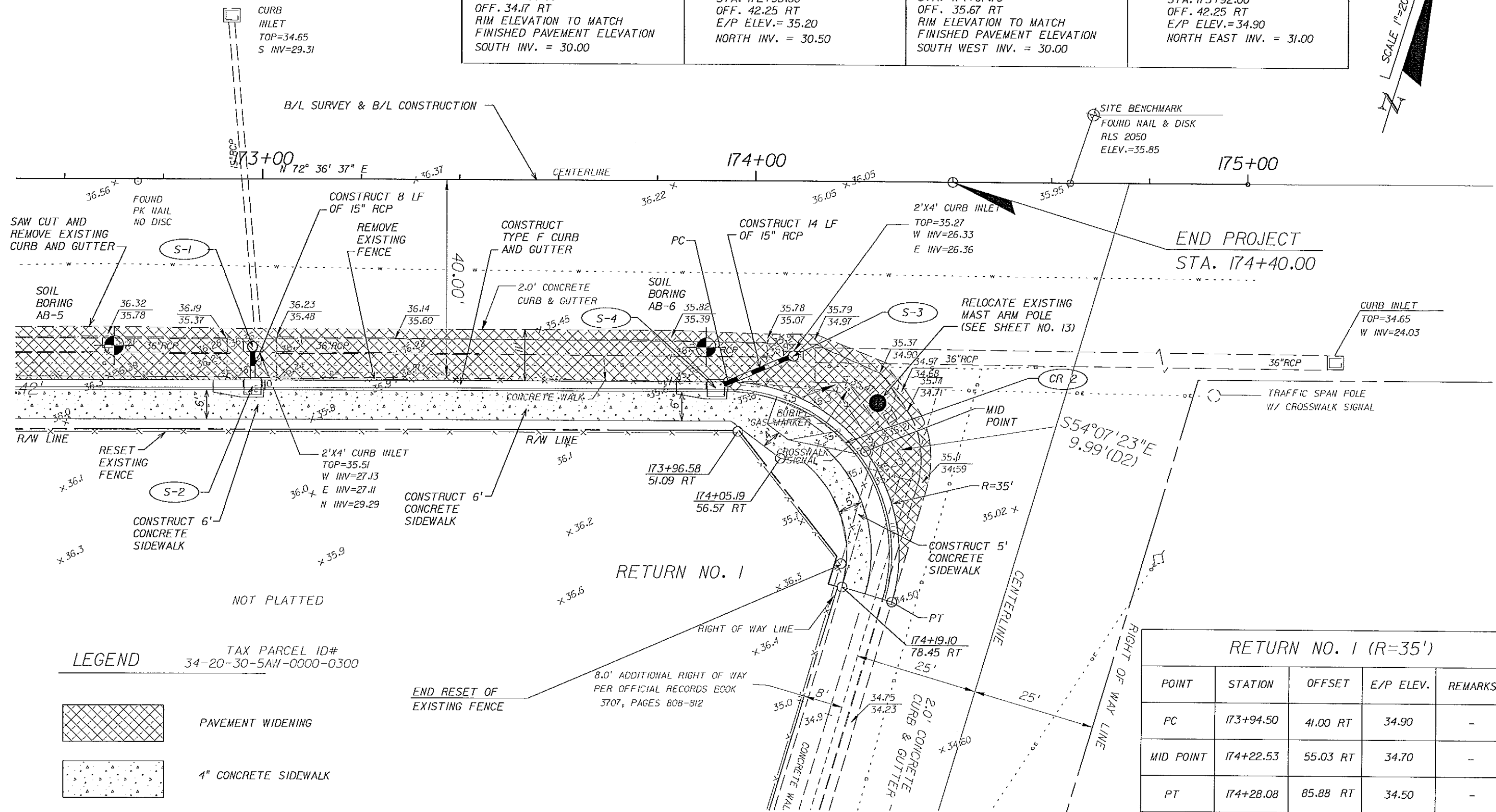
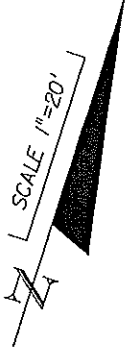
ROAD NO.	PROJECT NO.
SR 434	WSC-006-2



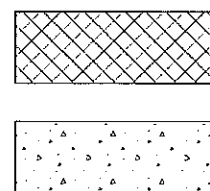
SR 434 AND HAYES ROAD
INTERSECTION IMPROVEMENTS
PLAN SHEET

SHEET NO.
4

S-1	S-2	S-3	S-4
REMOVE EXISTING CURB INLET TOP CONSTRUCT TYPE 7 MANHOLE TOP STA. 172+98.00 OFF. 34.17 RT RIM ELEVATION TO MATCH FINISHED PAVEMENT ELEVATION SOUTH INV. = 30.00	CONSTRUCT TYPE P-5 CURB INLET STA. 172+98.00 OFF. 42.25 RT E/P ELEV.= 35.20 NORTH INV. = 30.50	REMOVE EXISTING CURB INLET TOP CONSTRUCT TYPE 7 MANHOLE TOP STA. 174+07.78 OFF. 35.67 RT RIM ELEVATION TO MATCH FINISHED PAVEMENT ELEVATION SOUTH WEST INV. = 30.00	CONSTRUCT TYPE P-5 CURB INLET STA. 173+92.00 OFF. 42.25 RT E/P ELEV.= 34.90 NORTH EAST INV. = 31.00



LEGEND



TAX PARCEL ID#
34-20-30-5AW-0000-0300

PAVEMENT WIDENING

4" CONCRETE SIDEWALK

RETURN NO. 1 (R=35')				
POINT	STATION	OFFSET	E/P ELEV.	REMARKS
PC	173+94.50	41.00 RT	34.90	-
MID POINT	174+22.53	55.03 RT	34.70	-
PT	174+28.08	85.88 RT	34.50	-

REVISIONS		
DATE	BY	DESCRIPTION

ENGINEER OF RECORD,
FURSAN S. MUJED, P.E.
PROFESSIONAL ENGINEER CERTIFICATE NO. 51446
PEGASUS ENGINEERING, LLC.
301 WEST STATE ROAD 434, SUITE 309
WINTER SPRINGS, FLORIDA 32708
CERTIFICATE OF AUTHORIZATION NO. 27770



CITY OF WINTER SPRINGS
FLORIDA
ROAD NO. SR 434
PROJECT NO. WSC-006-2



SR 434 AND HAYES ROAD
INTERSECTION IMPROVEMENTS
PLAN SHEET

SHEET NO.
5

STATE OF FLORIDA
DEPARTMENT OF TRANSPORTATION
MATERIALS AND RESEARCH

ROAD NO. : S.R. 434
SECTION : 38
TOWNSHIP : 20 SOUTH
RANGE : 30 EAST
SUBMITTED BY : MUSTAPHA A. ABBOD, P.E.



DATE SURVEYED : 7/21/04
SURVEYED BY : PSI
DATE REPORTED : 7/26/04

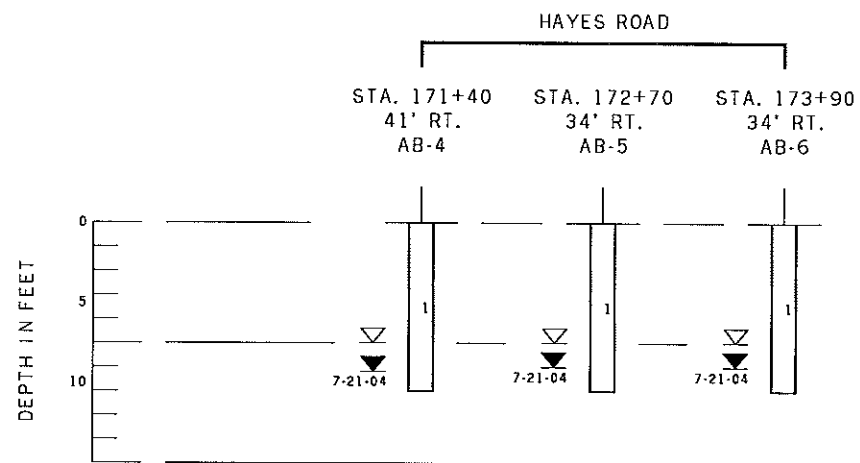
REPORT OF TESTS

STRATUM NO.	No. OF TESTS	LBR VALUE (%)	ORGANIC CONTENT		MOISTURE CONTENT		SIEVE ANALYSIS RESULTS					ATTERBERG LIMITS			DESCRIPTION	CORROSION TEST RESULTS					SUBSTRUCTURE ENVIRONMENTAL CLASSIFICATION			
			No. OF TESTS	% ORGANIC	No. OF TESTS	MOISTURE CONTENT	No. OF TESTS	% PASSING 10 MESH	% PASSING 40 MESH	% PASSING 60 MESH	% PASSING 100 MESH	% PASSING 200 MESH	No. OF TESTS	LIQUID LIMIT		PLASTIC INDEX	AASHTO GROUP	No. OF TESTS	RESISTIVITY OHM-CM	CHLORIDES PPM	SULFATE PPM	pH	CONCRETE	STEEL
1	-	-	-	-	3	4-7	3	99-100	98	79-83	13-14	1-2	-	NP	NP	A-3	LIGHT BROWN TO DARK BROWN FINE SAND	-	-	-	-	-	-	-



NOTES:

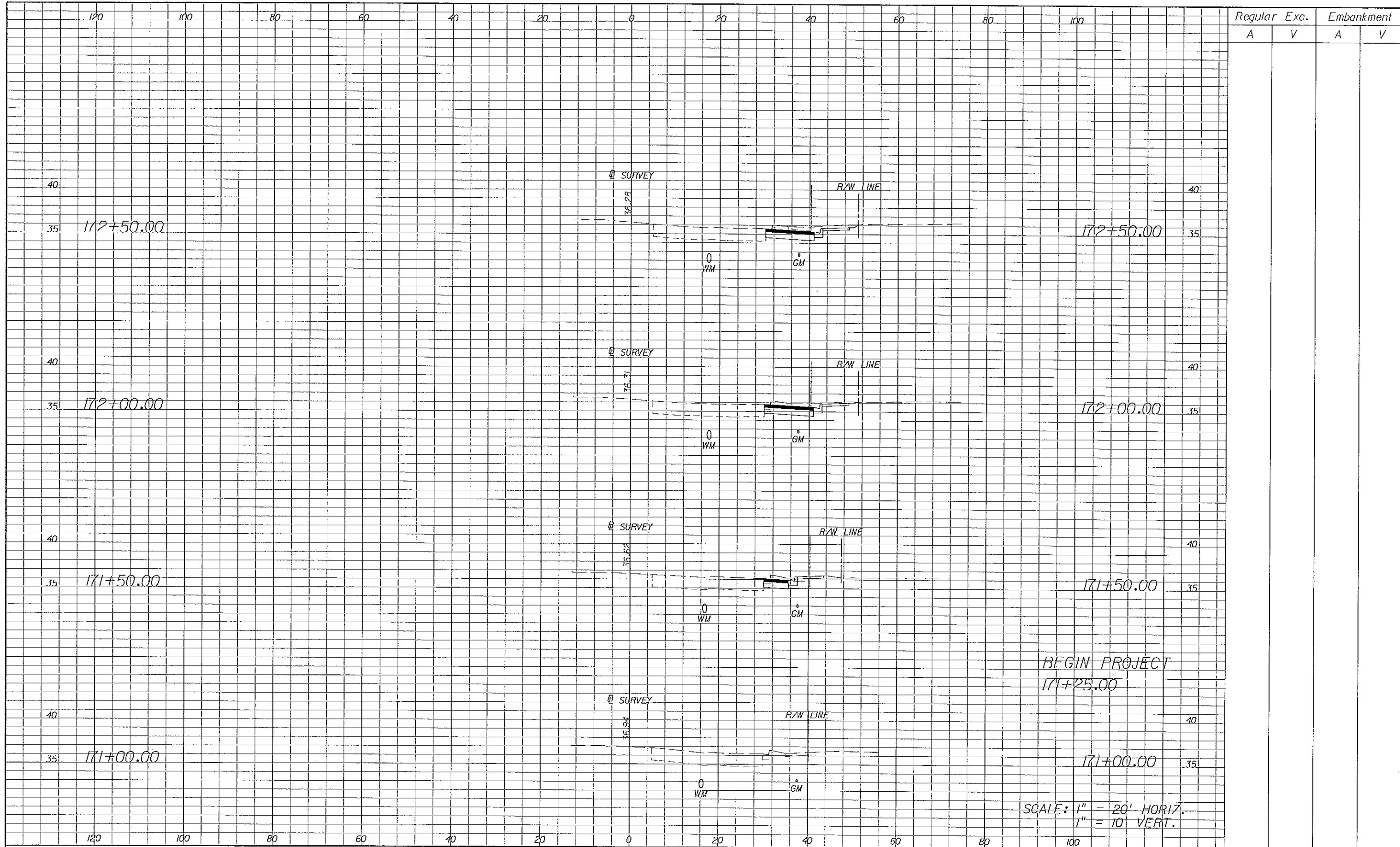
- (1) STRATA BOUNDARIES ARE APPROXIMATE AND REPRESENT SOIL STRATA AT EACH TEST HOLE LOCATION ONLY. ANY STRATUM CONNECTING LINES SHOWN ARE FOR ESTIMATING EARTHWORK ONLY AND DO NOT INDICATE ACTUAL STRATUM LIMITS. SUBSURFACE VARIATIONS BETWEEN BORINGS SHOULD BE ANTICIPATED AS INDICATED IN SECTION 2-4. FOR FURTHER DETAILS SEE SECTION 120-3.
- (2) IF THE SYMBOL "-" IS PRESENT, IT REPRESENTS UNMEASURED SOIL PARAMETERS.
- (3) ∇ INDICATES WATER TABLE WHERE ENCOUNTERED AT TIME OF SURVEY.
 Σ INDICATES ESTIMATED SEASONAL HIGH WATER LEVEL.
- GNE INDICATES GROUNDWATER TABLE NOT ENCOUNTERED WITHIN THE DEPTH OF THE BORING.
- (4) THE MATERIAL FROM STRATUM 1 APPEARS SATISFACTORY FOR USE IN THE EMBANKMENT WHEN UTILIZED IN ACCORDANCE WITH INDEX NO. 505.
- (5) THE SYMBOL "NP" REPRESENTS NON-PLASTIC.

REVISIONS			ENGINEER OF RECORD: MUSTAPHA A. ABBOD, P.E., #56112 PROFESSIONAL SERVICE INDUSTRIES, INC. 1748 33RD STREET ORLANDO, FLORIDA 32839 (407)304-5560		CITY OF WINTER SPRINGS FLORIDA		 Information To Build On Engineering • Consulting • Testing CERTIFICATE OF AUTHORIZATION No. 00002094	S.R. 434 & HAYES ROAD INTERSECTION IMPROVEMENTS ROADWAY SOIL SURVEY	SHEET NO.
DATE	BY	DESCRIPTION			ROAD NO.	PROJECT NO.			6



- LEGEND**
- 1 Light brown to dark brown fine SAND, (A-3)
 - (A-3) A. A. S. H. T. O. soil classification group symbol
 - GNE Groundwater not encountered
 - ▼
7-21-04 Depth to groundwater level in feet with date of reading
 - ▽ Estimated seasonal high groundwater level

REVISIONS		ENGINEER OF RECORD: MUSTAPHA A. ABBOUD, P.E. #56112 PROFESSIONAL SERVICE INDUSTRIES, INC. 1748 33RD STREET ORLANDO, FLORIDA 32839 (407)304-5560		CITY OF WINTER SPRINGS FLORIDA		 Information To Build On Engineering • Consulting • Testing CERTIFICATE OF AUTHORIZATION No. 00002094	S.R. 434 & HAYES ROAD INTERSECTION IMPROVEMENTS ROADWAY SOIL SURVEY	SHEET NO.
DATE	BY			ROAD NO.	PROJECT NO.			7
				SR 434	WSC-006-2			



Regular		Exc.		Embankment	
A	V	A	V	A	V

REVISIONS	
DATE	DESCRIPTION

ENGINEER OF RECORD,
FURSAN S. MUNJED, P.E.
 PROFESSIONAL ENGINEER CERTIFICATE NO. 51446
 PEGASUS ENGINEERING, LLC.
 301 WEST STATE ROAD 434, SUITE 309
 WINTER SPRINGS, FLORIDA 32708
 CERTIFICATE OF AUTHORIZATION NO. 27770



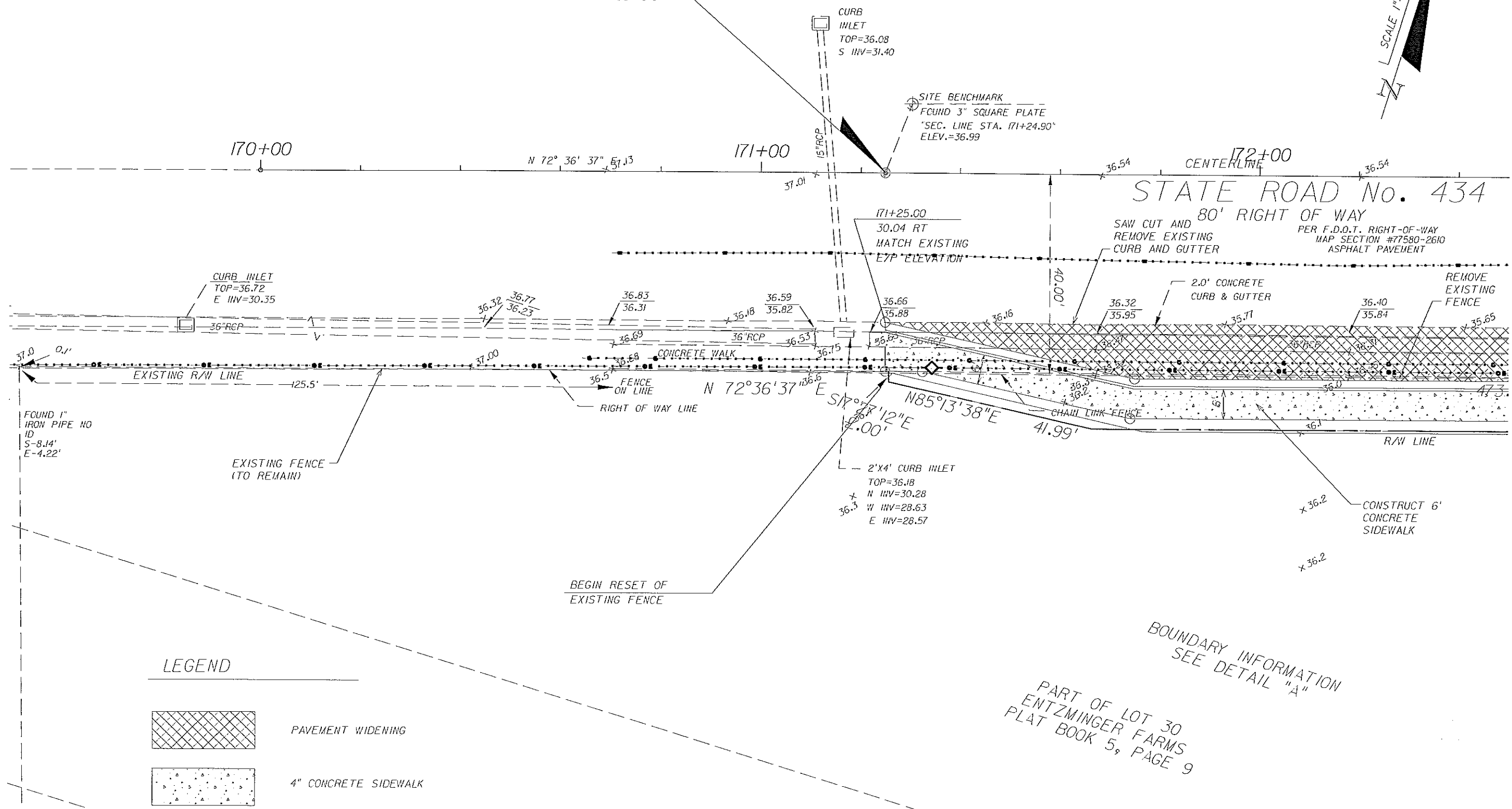
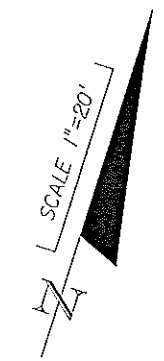
CITY OF WINTER SPRINGS
 FLORIDA
 ROAD NO. SR 434
 PROJECT NO. WSC-006-2



SR 434 AND HAYES ROAD
 INTERSECTION IMPROVEMENTS
 ROADWAY CROSS SECTIONS

SHEET NO.
 8


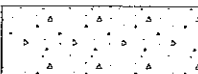
BEGIN PROJECT
STA. 171+25.00



STATE ROAD No. 434
80' RIGHT OF WAY

PER F.D.O.T. RIGHT-OF-WAY
MAP SECTION #77580-2610
ASPHALT PAVEMENT

LEGEND

-  PAVEMENT WIDENING
-  4" CONCRETE SIDEWALK

BOUNDARY INFORMATION
SEE DETAIL "A"
PART OF LOT 30
ENTZMINGER FARMS
PLAT BOOK 5, PAGE 9

REVISIONS		
DATE	BY	DESCRIPTION

ENGINEER OF RECORD:
FURSAN S. MUNJED, P.E.
PROFESSIONAL ENGINEER CERTIFICATE NO. 51446
PEGASUS ENGINEERING, LLC.
301 WEST STATE ROAD 434, SUITE 309
WINTER SPRINGS, FLORIDA 32708
CERTIFICATE OF AUTHORIZATION NO. 27770



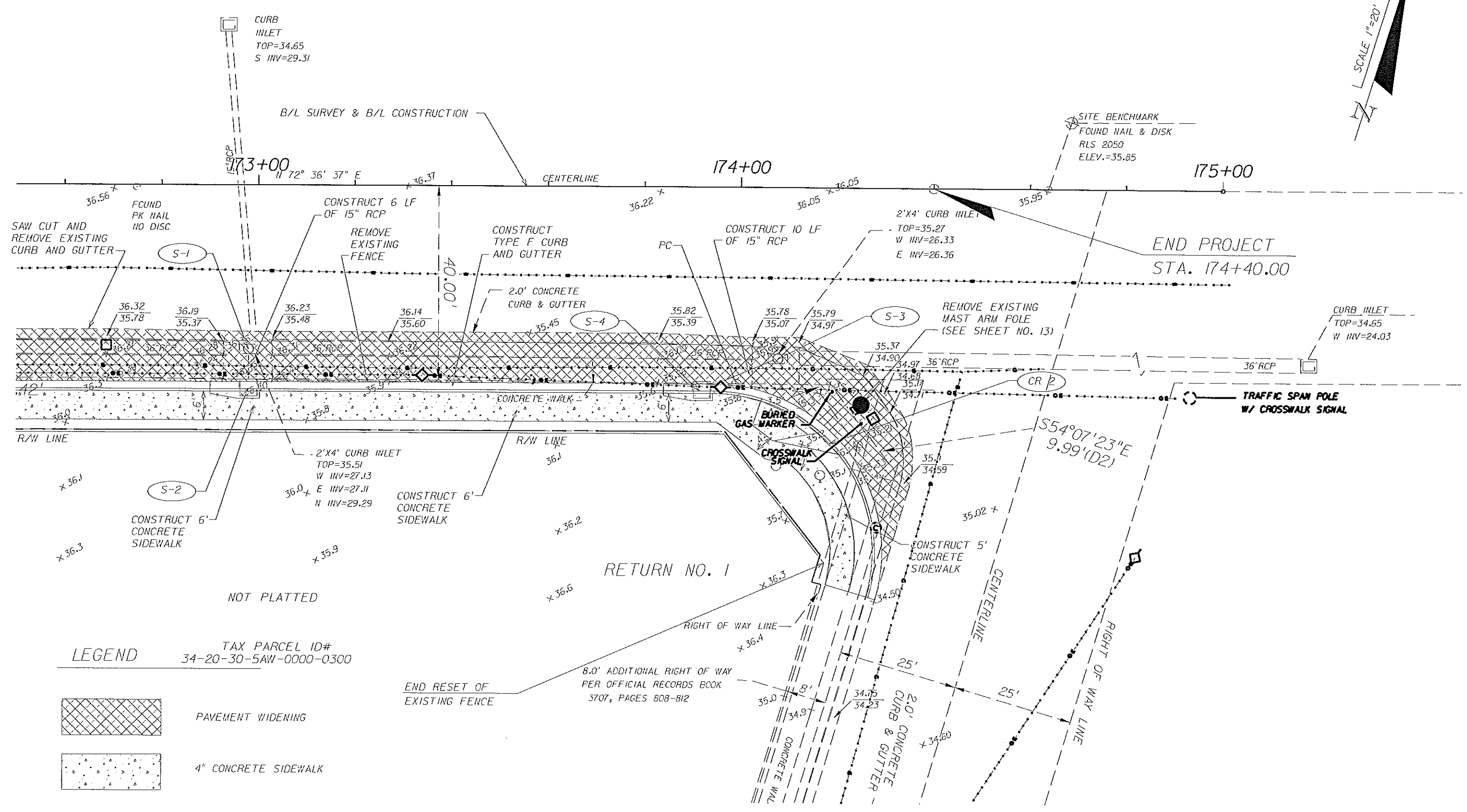
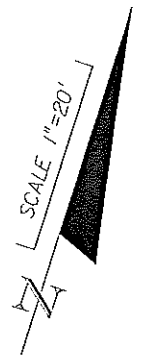
CITY OF WINTER SPRINGS
FLORIDA

ROAD NO.	PROJECT NO.
SR 434	WSC-006-2



SR 434 AND HAYES ROAD
INTERSECTION IMPROVEMENTS
UTILITY ADJUSTMENTS

SHEET NO.
10



LEGEND

TAX PARCEL ID#
34-20-30-5AW-0000-0300

NOT PLATTED

PAVEMENT WIDENING

4" CONCRETE SIDEWALK

REVISIONS		
DATE	BY	DESCRIPTION

ENGINEER OF RECORD,
FURSAN S. MUNJED, P.E.
 PROFESSIONAL ENGINEER CERTIFICATE NO. 51446
 PEGASUS ENGINEERING, LLC.
 301 WEST STATE ROAD 434, SUITE 309
 WINTER SPRINGS, FLORIDA 32708
 CERTIFICATE OF AUTHORIZATION NO. 27770



CITY OF WINTER SPRINGS
 FLORIDA

ROAD NO.	PROJECT NO.
SR 434	WSC-006-2

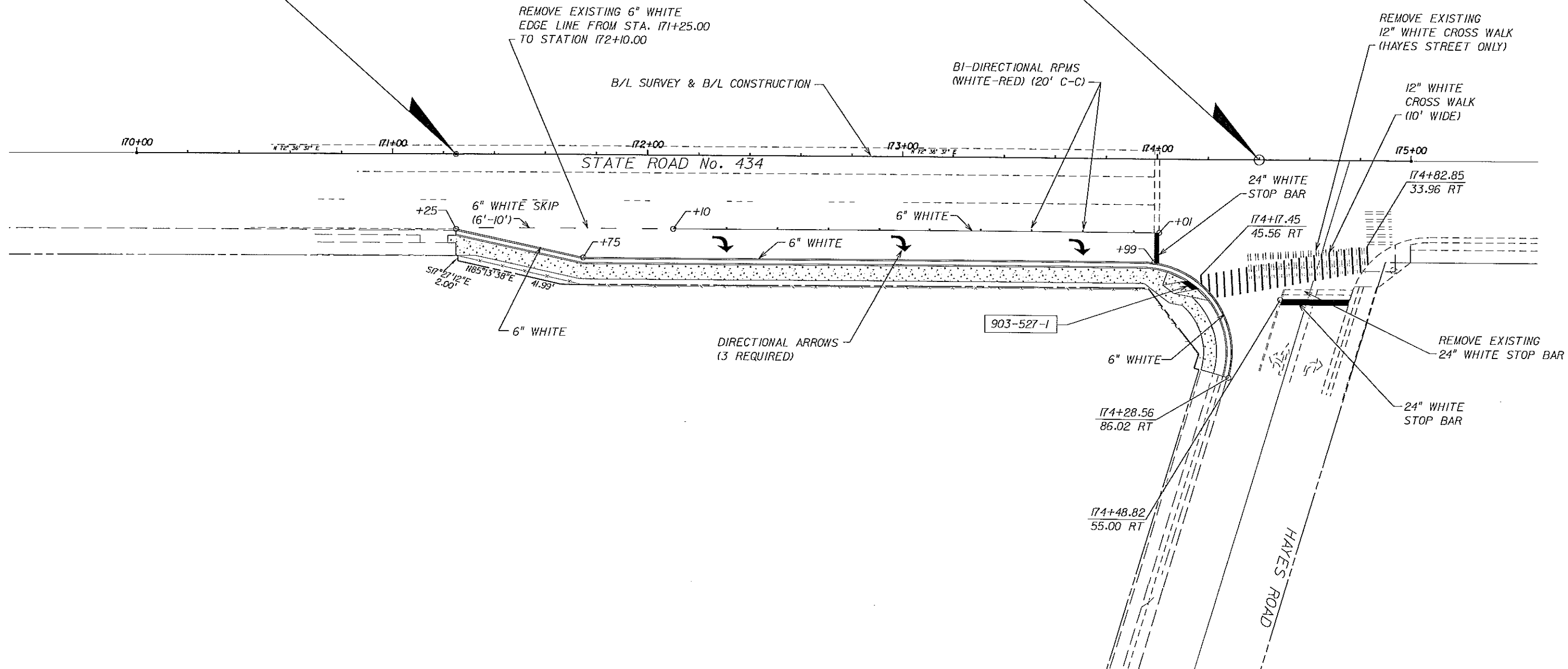


SR 434 AND HAYES ROAD
 INTERSECTION IMPROVEMENTS
 UTILITY ADJUSTMENTS

SHEET NO.
 11

BEGIN PROJECT
STA. 171+25.00

END PROJECT
STA. 174+40.00



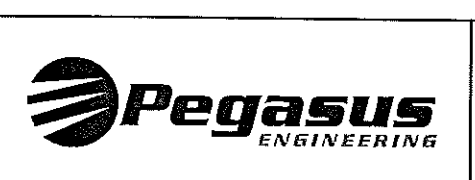
REVISIONS	
DATE	DESCRIPTION

ENGINEER OF RECORD:
FURSAN S. MUNJED, P.E.
 PROFESSIONAL ENGINEER CERTIFICATE NO. 51446
 PEGASUS ENGINEERING, LLC.
 301 WEST STATE ROAD 434, SUITE 309
 WINTER SPRINGS, FLORIDA 32708
 CERTIFICATE OF AUTHORIZATION NO. 27770



CITY OF WINTER SPRINGS
 FLORIDA

ROAD NO.	PROJECT NO.
SR 434	WSC-006-2



SR 434 AND HAYES ROAD
 INTERSECTION IMPROVEMENTS
 SIGNING & PAVEMENT MARKINGS

SHEET NO.
 12

GENERAL

1. FOR ADDITIONAL DETAILS OF TRAFFIC SIGNAL INSTALLATIONS FOR THIS PROJECT SEE FDOT DESIGN STANDARDS, DATED 2008, INDEX NOS. 17356, 17721, 17727, 17736, 17764, 17781, 17784, 17841, AND 17870.
2. THE CONTRACTOR SHALL CONTACT CITY OF WINTER SPRINGS ENGINEERING, SEMINOLE COUNTY TRAFFIC ENGINEERING AND FDOT TWO BUSINESS DAYS PRIOR TO BEGINNING ANY WORK IN THE INTERSECTION. MAINTAINING AGENCY: SEMINOLE COUNTY
3. THE CONTRACTOR SHALL NOTIFY ALL UTILITIES AT LEAST 48 HOURS IN ADVANCE OF ANY OPERATION THAT MAY CONFLICT WITH OVERHEAD OR UNDERGROUND UTILITIES.
4. THE CONTRACTOR SHALL BE RESPONSIBLE FOR LOCATING ALL UTILITIES PRIOR TO CONSTRUCTION.
5. CONTRACTOR SHALL NOTIFY SEMINOLE COUNTY TRAFFIC ENGINEERING 24 HRS PRIOR TO DESTROYING EXISTING ROADWAY SENSORS. AT NO TIME IS THE CONTRACTOR TO CHANGE ANY SIGNAL TIMINGS. SEMINOLE COUNTY WILL MAINTAIN ALL SIGNAL TIMINGS BEFORE, DURING, AND AFTER CONSTRUCTION.
6. THE MAINTENANCE OF SIGNALS SHALL REMAIN THE RESPONSIBILITY OF THE CONTRACTOR, FROM THE TIME CONTRACT WORK BEGINS UNTIL FINAL ACCEPTANCE BY SEMINOLE COUNTY, ON A BY INTERSECTION BASIS. THE CONTRACTOR SHALL HAVE A I.M.S.A. LEVEL 2 SIGNAL TECHNICIAN ON SITE THROUGH ALL PHASES OF CONSTRUCTION AND ON CALL WITH A 2 HR, MAXIMUM RESPONSE TIME.
7. TRAFFIC SHALL BE MAINTAINED IN ACCORDANCE WITH THE FDOT DESIGN STANDARDS, DATED 2008, ATTENTION IS DIRECTED TO THE INDEX 600 SERIES, PER INDEX NUMBERS LISTED.
8. SIGNAL CABLE AND LOOP WIRE ARE NOT TO BE IN THE SAME PULL BOX.
9. LANE CLOSURES WILL BE PERMITTED ONLY DURING ACTIVE WORK PERIODS WHEN THE LANE CLOSURE IS NEEDED TO ACCOMPLISH THE WORK. NO LONG TERM LANE CLOSURES WILL BE PERMITTED. NO LANE CLOSURES WILL BE PERMITTED BETWEEN THE HOURS OF 7:00 AM - 9:00 PM.
10. ALL INSTALLATIONS TO BE AS PER SEMINOLE COUNTY STANDARDS.
11. ALL EQUIPMENT/MATERIALS TO BE APPROVED BY SEMINOLE COUNTY TRAFFIC ENGINEERING.
 - A. ALL SIGNAL HEADS TO BE CAST ALUMINUM WITH TUNNEL VISORS.
 - B. ALL PULL BOXES TO BE NON-METALLIC LOCATED A MINIMUM OF 5' FROM RADII AND 10' OFF EDGE OF PAVEMENT, UNLESS OTHERWISE NOTED.
12. AT THE TIME OF FINAL INSPECTION THE CONTRACTOR SHALL FURNISH CITY OF WINTER SPRINGS, SEMINOLE COUNTY AND FDOT ONE SET EACH OF CONSTRUCTION AS-BUILT PLANS.
13. CONTRACTOR IS TO INSURE THAT A 4 FOOT BY 4 FOOT FLAT LANDING AREA OF SIDEWALK IS ADJACENT TO ALL PED BUTTONS FOR PEDESTRIAN ACCESS.
14. THE USE OF "JONES" PLUGS IS NOT PERMITTED.
15. 3 SPARE CONDUCTORS ARE TO BE RUN TO THE FURTHEST PEDESTRIAN SIGNAL HEAD.
16. THE COST OF GROUNDING ELECTRODE SHALL BE INCLUDED UNDER THE PAY ITEM OF POLES, CABINETS, PEDESTALS, ETC. IN ACCORDANCE WITH THE FDOT STANDARD SPECIFICATIONS FOR ROAD AND BRIDGE CONSTRUCTION DATED 2007 AND ALL SUPPLEMENTS AND REVISIONS THERE TO.
17. ANY NEW OR EXISTING STRIPING CUT BECAUSE OF LOOP PLACEMENT SHALL BE RE-STRIPED PRIOR TO ACCEPTANCE.
18. THE CONTRACTOR SHALL HAND DIG THE FIRST 4' AT EACH POLE LOCATION AND THE FIRST 2' AT EACH PEDESTAL LOCATION TO VERIFY NO UTILITY CONFLICTS.
19. ALL COMMUNICATION CABLE SHALL BE INSTALLED IN SEPARATE PULL BOXES.
20. ALL NEW LOOP DETECTORS ARE TO BE INSTALLED IN THE CABINET PRIOR TO CUTTING THE EXISTING LOOPS.
21. ALL PEDESTRIAN SIGNALS SHALL BE 16" LED, COUNTDOWN TYPE.
22. THE CONTRACTOR SHALL BE RESPONSIBLE FOR SUPPLYING APPROVED SHOP DRAWINGS SHOWING THE BOLT PATTERN AND ARM ORIENTATION PRIOR TO THE PRE-DRILL SHAFT MEETING.

23. THE CONTRACTOR IS REQUIRED TO INSPECT THE INSTALLATION OF THE TRAFFIC SIGNALS IN ACCORDANCE WITH FDOT SPECIFICATION 105-5.10. THE CONTRACTOR SHALL COORDINATE THE FINAL ACCEPTANCE INSPECTION IN ACCORDANCE WITH FDOT SPECIFICATION 611-2.2 WITH THE ENGINEER AT LEAST TEN DAYS IN ADVANCE. THE MAINTAINING AGENCY AND RAY MARLIN AT (386) 943-5318 SHOULD ALSO BE CONTACTED TEN DAYS BEFORE THE INSPECTION IT TO BE PERFORMED SO THEY MAY BE PRESENT.
24. THE LOCAL PERMIT MANAGER MUST BE INFORMED TWO BUSINESS DAYS BEFORE ANY DIRECTIONAL BORES.
25. EXISTING LOOPS DAMAGED BY THE CONTRACTOR DURING CONSTRUCTION TO BE REPLACED BY THE CONTRACTOR AT THE CONTRACTOR'S EXPENSE.
26. COLOR CODES FOR MAINTAINING AGENCIES TO BE USED.
27. THE CONTRACTOR SHALL BE RESPONSIBLE FOR HIRING A CERTIFIED DRILLED SHAFT CTQP LEVEL I CONSTRUCTION ENGINEERING AND INSPECTION (CEI) FIRM, AND A CONCRETE TESTING LABORATORY FOR THE PURPOSE OF INSPECTING ALL DRILLED SHAFT INSTALLATIONS PER FDOT STANDARDS. THE FIRM SHALL THEN SUBMIT A SIGNED AND SEALED REPORT VERIFIED BY THE P.E. IN RESPONSIBLE CHARGE OF THE DRILLED SHAFT INSPECTOR TO THE DEPARTMENT FOR APPROVAL. FAILURE TO OBTAIN THESE SERVICES PRIOR TO THE CONSTRUCTION OF THE DRILLED SHAFT(S) SHALL RESULT IN THE REJECTION OF THE DRILLED SHAFT(S).
28. CONTRACTOR SHALL CONTACT JULIA BLACKWELDER, FDOT AT (386) 740-3454 TO SCHEDULE INITIAL/ POST-CONSTRUCTION INSPECTION ON MAST ARMS, ONE MONTH PRIOR TO COMPLETION OF JOB.

630-1-XX

CONDUIT FOR ELECTRICAL POWER SERVICE TO BE 1-1/2" INCH RIGID GALVANIZED. ALL OTHER CONDUIT TO BE 2" (MINIMUM) SCHEDULE 40 P.V.C..

632-7-1

PAYMENT SHALL INCLUDE THE COST OF TRENCHING AND ALL CONDUIT IN TRENCH. IT SHOULD BE NOTED THAT NO TEST BORINGS WERE MADE WHERE CONDUIT RUNS ARE TO BE INSTALLED.

635-1-II

BEFORE ORDERING SIGNAL CABLE, THE CONTRACTOR SHALL VERIFY COLOR CODES WITH SEMINOLE COUNTY. ALL WIRING TO BE PER SEMINOLE COUNTY SPECIFICATIONS.

648-99

PULL BOXES SHALL BE NON-METALLIC, TRAFFIC BEARING BOXES SPECIFICATIONS SECTION B630-3.3, PARAGRAPH 5, IS HEREWITH EXPANDED TO INCLUDE PULL BOXES. PULL BOXES SHALL BE INSTALLED AT INTERVALS OF NOT MORE THAN 200 FEET AND SHALL NOT BE PLACED IN ANY DRIVEWAYS.

PULL BOX COVERS SHALL BE FDOT APPROVED OF NON-METALLIC CONSTRUCTION WITH RECESSED COVER LOGO "TRAFFIC SIGNAL" OR "FIBER OPTIC" AS APPROPRAITE.

FIELD TESTS

INCLUDES THE COST OF RELOCATING THE PEDESTRIAN SIGNAL, SIGNS, ETC.

THE CONTRACTOR IS REQUIRED TO INSPECT THE TRAFFIC SIGNAL IN ACCORDANCE WITH STANDARD SPECIFICATION 105-5.10.

THE CONTRACTOR IS TO CONTACT SEMINOLE COUNTY TRAFFIC ENGINEERING AND RAY MARLIN AT (386) 943-5318 TEN (10) DAYS BEFORE INSPECTION IS PERFORMED.

SHOULD THE CONTRACTOR REQUEST AN INSPECTION AND THE CONTRACTOR IS NOT PREPARED FOR THE INSPECTION, THE CONTRACTOR WILL BE BACK CHARGED FOR THE CONSULTANT INSPECTOR'S TIME.

THE CONTRACTOR WILL BE REQUIRED TO PROVIDE A 90 DAY WARRANTY PERIOD AS OUTLINED IN FDOT STANDARD SPECIFICATIONS FOR ROAD AND BRIDGE CONSTRUCTION DATED 2007.

PAY ITEM NOTES

REVISIONS

DATE	BY	DESCRIPTION

ENGINEER OF RECORD,
FURSAN S. MUNJED, P.E.
 PROFESSIONAL ENGINEER CERTIFICATE NO. 51446
 PEGASUS ENGINEERING, LLC.
 301 WEST STATE ROAD 434, SUITE 309
 WINTER SPRINGS, FLORIDA 32708
 CERTIFICATE OF AUTHORIZATION NO. 27770



CITY OF WINTER SPRINGS
 FLORIDA

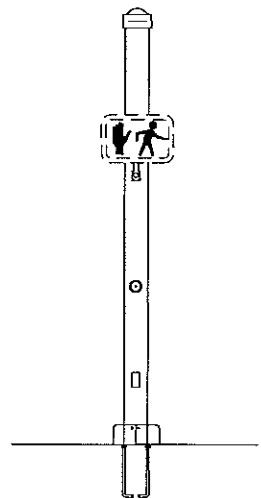
ROAD NO.	PROJECT NO.
SR 434	WSC-006-2



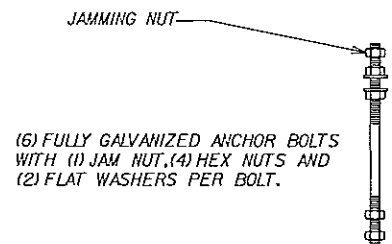
SR 434 AND HAYES ROAD
 INTERSECTION IMPROVEMENTS
 SIGNALIZATION GENERAL NOTES

SHEET
 NO.

13



DECORATIVE STEEL PEDESTAL
COLOR (BLACK)



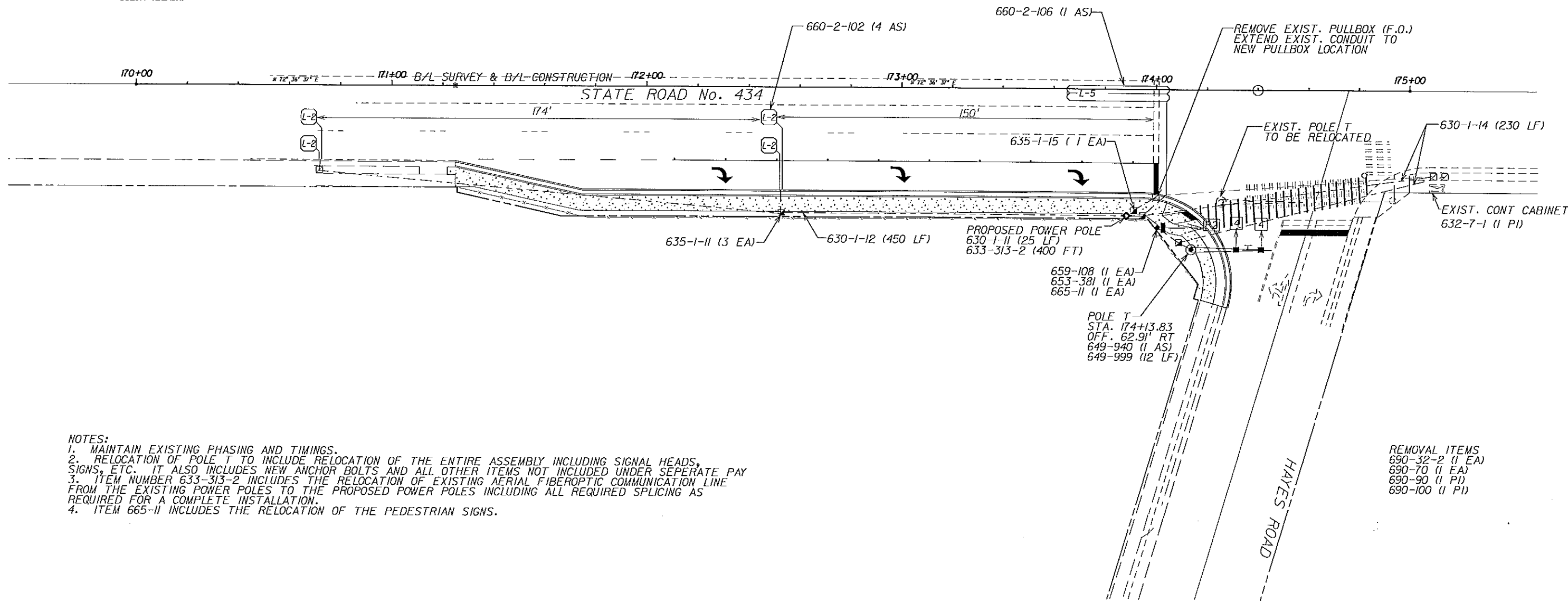
(6) FULLY GALVANIZED ANCHOR BOLTS WITH (1) JAM NUT, (4) HEX NUTS AND (2) FLAT WASHERS PER BOLT.

NOTE: *J-BOLTS ARE NOT PERMITTED

ANCHOR BOLT



SCALE 1"=10'



- NOTES:**
1. MAINTAIN EXISTING PHASING AND TIMINGS.
 2. RELOCATION OF POLE T TO INCLUDE RELOCATION OF THE ENTIRE ASSEMBLY INCLUDING SIGNAL HEADS, SIGNS, ETC. IT ALSO INCLUDES NEW ANCHOR BOLTS AND ALL OTHER ITEMS NOT INCLUDED UNDER SEPERATE PAY
 3. ITEM NUMBER 633-313-2 INCLUDES THE RELOCATION OF EXISTING AERIAL FIBEROPTIC COMMUNICATION LINE FROM THE EXISTING POWER POLES TO THE PROPOSED POWER POLES INCLUDING ALL REQUIRED SPLICING AS REQUIRED FOR A COMPLETE INSTALLATION.
 4. ITEM 665-11 INCLUDES THE RELOCATION OF THE PEDESTRIAN SIGNS.

- REMOVAL ITEMS**
- 690-32-2 (1 EA)
 - 690-70 (1 EA)
 - 690-90 (1 PI)
 - 690-100 (1 PI)

REVISIONS	
DATE	DESCRIPTION

ENGINEER OF RECORD,
FURSAN S. MUNJED, P.E.
 PROFESSIONAL ENGINEER CERTIFICATE NO. 51446
 PEGASUS ENGINEERING, LLC.
 301 WEST STATE ROAD 434, SUITE 309
 WINTER SPRINGS, FLORIDA 32708
 CERTIFICATE OF AUTHORIZATION NO. 27770



CITY OF WINTER SPRINGS
 FLORIDA

ROAD NO.	PROJECT NO.
SR 434	WSC-006-2



SR 434 AND HAYES ROAD
 INTERSECTION IMPROVEMENTS
 SIGNALIZATION PLAN

SHEET NO.
 14

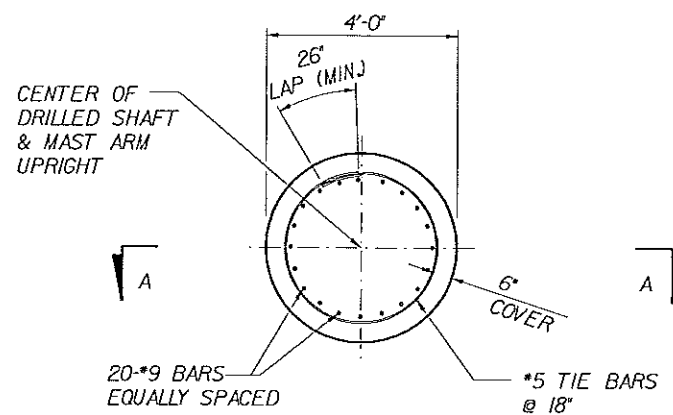
FOUNDATION CONSTRUCTION NOTES

- 1) The contractor shall not rely upon natural slurry to prevent caving of soils or to maintain the open hole. If mineral slurry is used, adequate water tanks, slurry tank, and de-sanding equipment shall be used.
- 2) The Contractor shall be prepared to use temporary casing or other methods as needed to control artesian water levels.

FOUNDATION MATERIALS

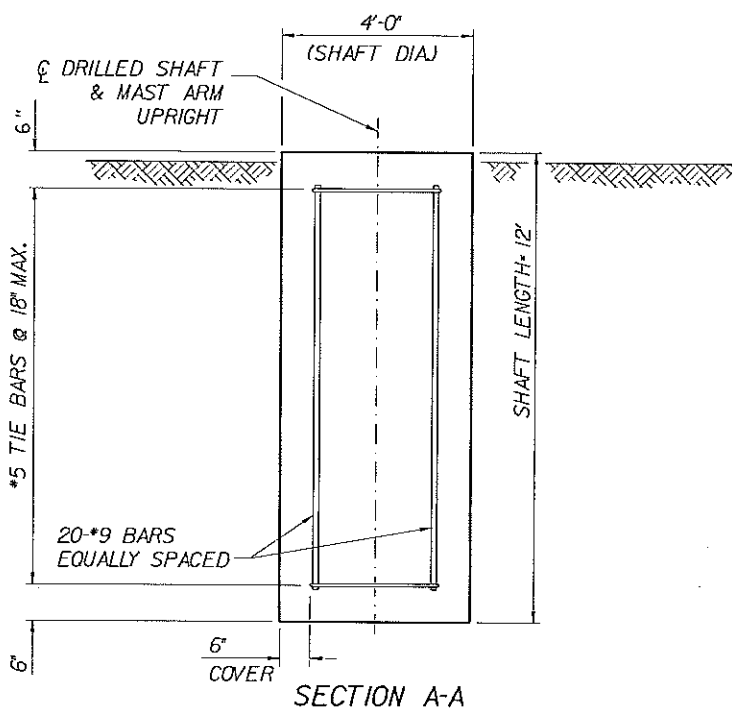
- 1) Reinforcing Steel shall be ASTM A615, Grade 60.
- 2) Concrete shall be FDOT Class IV (Drilled Shaft) with a minimum 28-day compressive strength of 4000 psi.
- 3) Grout shall have a minimum 28-day compressive strength of 5000 psi and shall meet the requirements of FDOT Specification Section 934.

NOTE:
ORIENT ALL CONDUIT
AS REQUIRED TO AVOID
BOLT CIRCLE

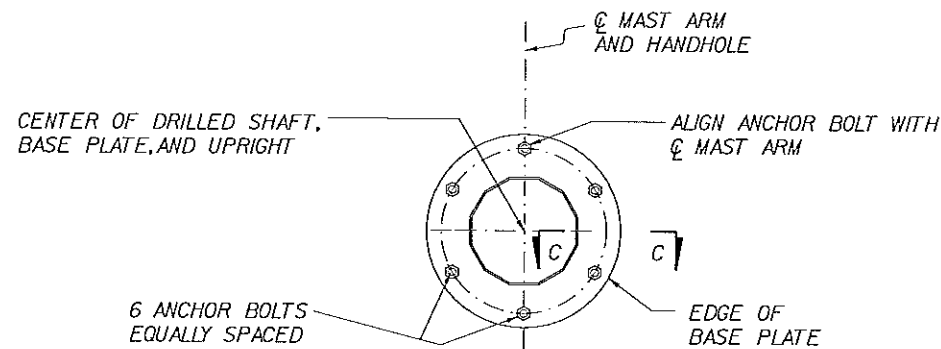


FOUNDATION PLAN

NOTE: 6" MIN. COVER ON SHAFT REINFORCEMENT

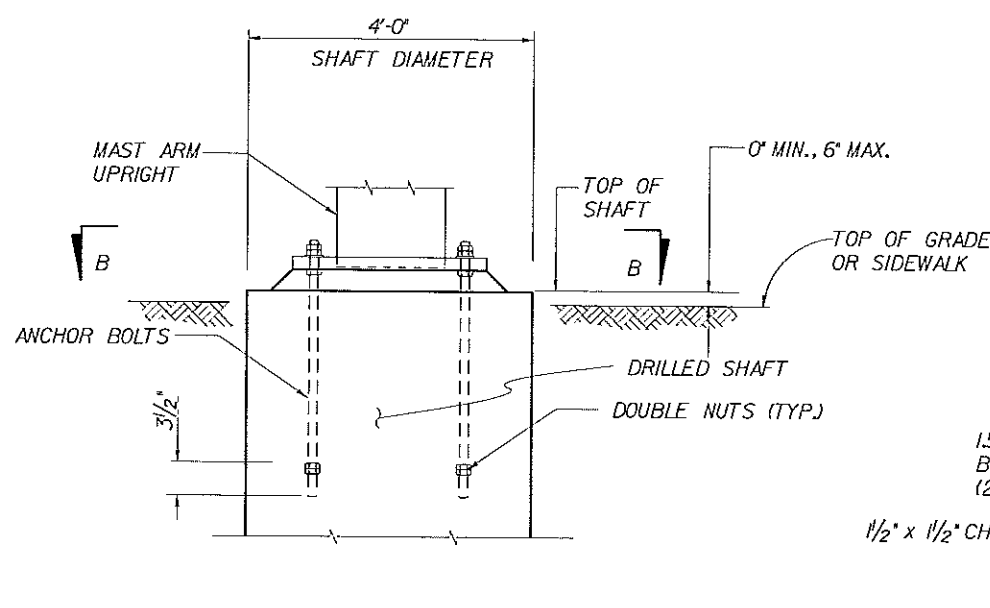


SECTION A-A



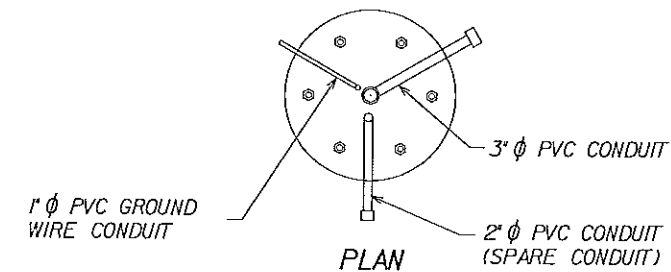
SECTION B-B

NOTE: CONCRETE AND REINFORCEMENT NOT SHOWN

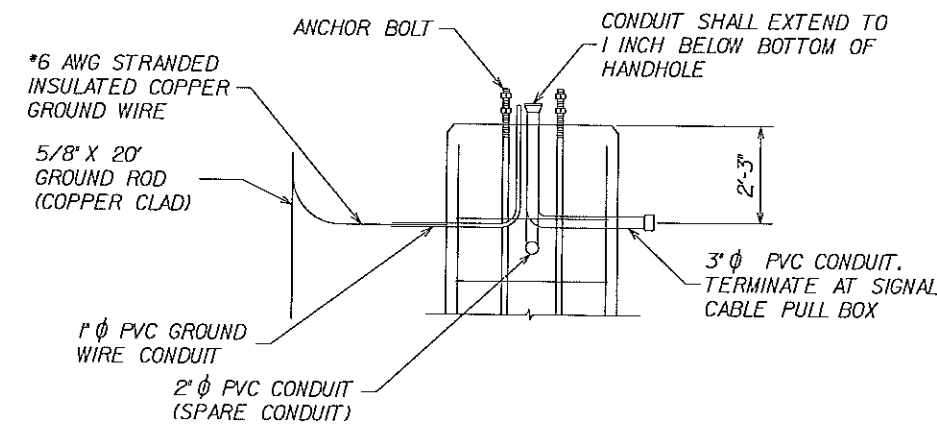


BASE PLATE AND ANCHORAGE ELEVATION

NOTE: REINFORCEMENT NOT SHOWN

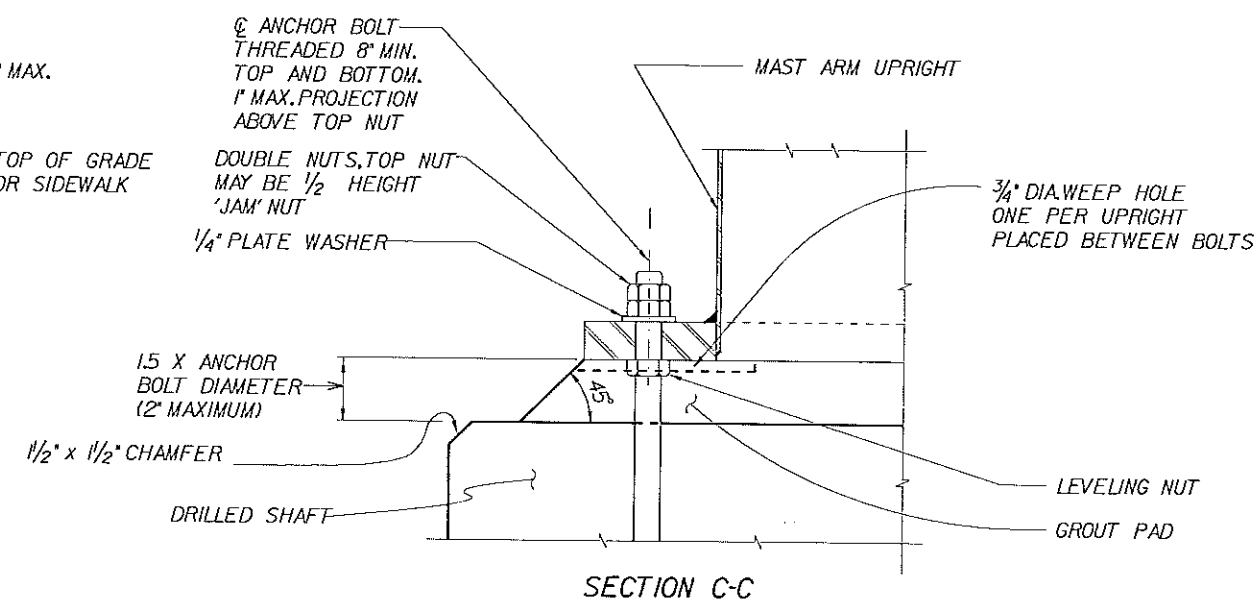


PLAN



ELEVATION

FOUNDATION CONDUIT DETAIL



SECTION C-C

REVISIONS		
DATE	BY	DESCRIPTION

ENGINEER OF RECORD:
M. DAVID FINLEY, P.E.
PROFESSIONAL ENGINEER CERTIFICATE NO. 40119
PEGASUS ENGINEERING, LLC.
301 WEST STATE ROAD 434, SUITE 309
WINTER SPRINGS, FLORIDA 32708
CERTIFICATE OF AUTHORIZATION NO. 27770



CITY OF WINTER SPRINGS
FLORIDA
ROAD NO. SR 434
PROJECT NO. WSC-006-2



SR 434 AND HAYES ROAD
INTERSECTION IMPROVEMENTS
FOUNDATION DETAILS

SHEET NO.
15