

CITY OF WINTER SPRINGS, FLORIDA

PROJECT NUMBER
WSC-006-1

WINTER SPRINGS CITY COMMISSION

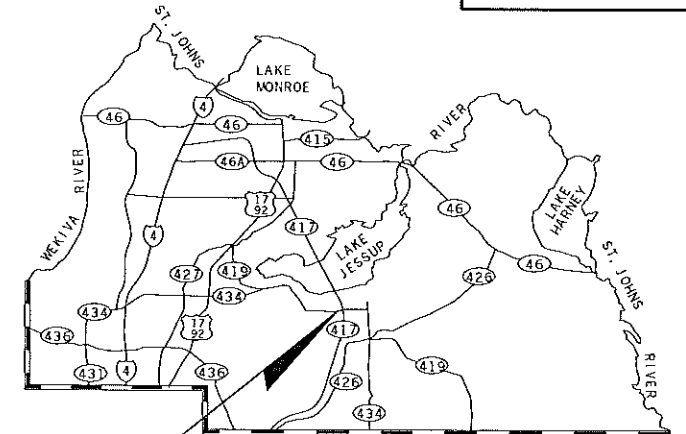
JOHN F. BUSH, MAYOR
 JEAN HOVEY
 RICK BROWN
 GARY BONNER
 SALLY McGINNIS
 JOANNE M. KREBS
 KEVIN SMITH, ACTING CITY MANAGER
 ANTHONY A. GARGANESE, CITY ATTORNEY

PUBLIC WORKS/UTILITY DIRECTOR
 KIPTON LOCKCUFF, P.E.



CITY ENGINEER
 BRIAN FIELDS, P.E.

CONSTRUCTION PLANS FOR INTERSECTION IMPROVEMENTS AT SR 434 AND VISTA WILLA DRIVE

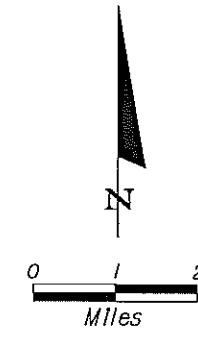
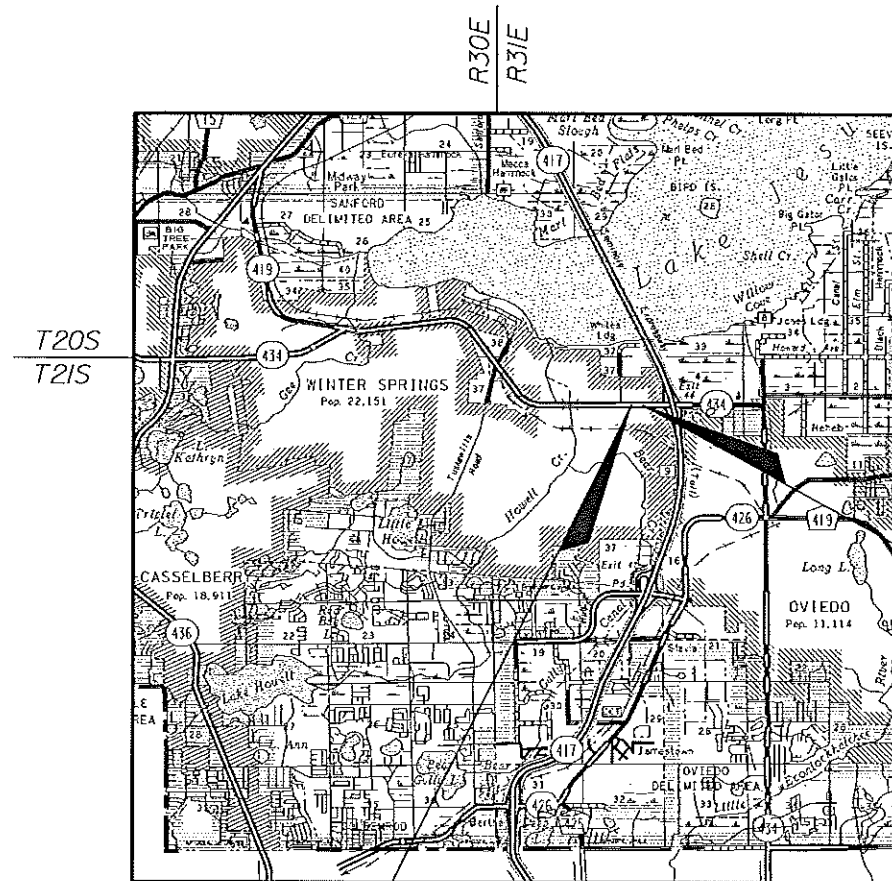


LOCATION OF PROJECT

COMPONENTS OF
 CONTRACT PLANS SET
 ROADWAY PLANS

INDEX OF ROADWAY PLANS

SHEET NO.	SHEET DESCRIPTION
1	KEY SHEET
2	GENERAL NOTES AND QUANTITIES
3	TYPICAL SECTIONS
4-5	PLAN SHEETS
6-7	ROADWAY CROSS SECTIONS
8-9	UTILITY ADJUSTMENT SHEETS
10	SIGNING & PAVEMENT MARKING PLAN
11-14	SIGNALIZATION PLANS



ROADWAY SHOP DRAWINGS
 TO BE SUBMITTED TO:
 FURSAN S. MUNJED, P.E.
 PEGASUS ENGINEERING, LLC
 301 WEST STATE ROAD 434
 SUITE 309
 WINTER SPRINGS, FLORIDA 32708
 PHONE 407-992-9160

PLANS PREPARED BY:

 PEGASUS ENGINEERING, LLC
 301 WEST STATE ROAD 434
 SUITE 309
 WINTER SPRINGS, FL 32708
 407-992-9160
 CERTIFICATE OF AUTHORIZATION NO. 27770

NOTE: THE SCALE OF THESE PLANS MAY
 HAVE CHANGED DUE TO REPRODUCTION.

**FINAL SUBMITTAL
 FEBRUARY 12, 2009**

GOVERNING STANDARDS AND SPECIFICATIONS:
 FLORIDA DEPARTMENT OF TRANSPORTATION,
 DESIGN STANDARDS DATED JANUARY 2008,
 AND STANDARD SPECIFICATIONS FOR ROAD AND
 BRIDGE CONSTRUCTION DATED 2007,
 AS AMENDED BY CONTRACT DOCUMENTS.

APPLICABLE DESIGN STANDARDS MODIFICATIONS: 1-1-09

For Design Standards Modifications click on
 "Design Standards" at the following web site:
<http://www.dot.state.fl.us/rddesign>

REVISIONS

LENGTH OF PROJECT		
	LINEAR FEET	MILES
ROADWAY	502.89	0.095
BRIDGES	0.00	0.000
NET LENGTH OF PROJECT	502.89	0.095
EXCEPTIONS	0.00	0.000
GROSS LENGTH OF PROJECT	502.89	0.095

KEY SHEET REVISIONS		
DATE	BY	DESCRIPTION

ROADWAY PLANS
 ENGINEER OF RECORD: FURSAN S. MUNJED, P.E.

P.E. NO.: 51446

SHEET NO.
1

GENERAL NOTES

- AT TIME OF FINAL INSPECTION THE CONTRACTOR SHALL FURNISH THE CITY OF WINTER SPRINGS TWO SETS OF AS-BUILT PLANS.
- THE CONTRACTOR SHALL NOTIFY ALL UTILITIES AT LEAST 48 HOURS IN ADVANCE OF ANY OPERATION THAT MAY CONFLICT WITH OVERHEAD OR UNDERGROUND UTILITIES. THE CONTRACTOR SHALL BE RESPONSIBLE FOR LOCATING AND COORDINATING THE RELOCATION OF ALL UTILITIES PRIOR TO CONSTRUCTION.
- IT SHALL BE THE CONTRACTORS RESPONSIBILITY TO EXAMINE THE JOB SITE CONDITIONS BEFORE SUBMITTING BID PROPOSALS.
- LANE CLOSURES WILL BE PERMITTED ONLY DURING ACTIVE WORK PERIODS WHEN THE LANE CLOSURE IS NEEDED TO ACCOMPLISH THE WORK. NO LONG TERM LANE CLOSURES WILL BE PERMITTED. LANE CLOSURES WILL BE PERMITTED BETWEEN 9:00 AM AND 4:00 PM (MONDAY THRU FRIDAY). NO LANE CLOSURES WILL BE PERMITTED DURING WEEKENDS.
- THE CONTRACTOR SHALL ADHERE TO THE FDOT DESIGN STANDARDS, DATED 2008, INDEX 600 SERIES AND THE FDOT STANDARD SPECIFICATIONS FOR ROAD AND BRIDGE CONSTRUCTION, DATED 2007 INCLUDING ALL SUPPLEMENTS AND REVISIONS THERETO.
- ALL MATERIALS, CONSTRUCTION METHODS, CONSTRUCTION INSPECTIONS, AND TESTING FOR THE PROJECT IMPROVEMENTS SHALL BE IN ACCORDANCE WITH THE FDOT SPECIFICATIONS FOR ROAD AND BRIDGE CONSTRUCTION INCLUDING ALL REVISIONS AND SUPPLEMENTS THERETO MOST RECENT EDITIONS.
- THE UTILITY LOCATIONS SHOWN IN PLANS ARE BASED ON INFORMATION PROVIDED BY THE UTILITY COMPANIES, PRIOR TO START OF CONSTRUCTION. THE CONTRACTOR SHALL COORDINATE WITH THE VARIOUS UTILITIES TO FIELD VERIFY THE LOCATION OF ALL EXISTING UTILITIES WHICH MAY INTERFERE WITH THE PROPOSED WORK. RELOCATION OR EXTENSION OF EXISTING UTILITIES SHALL BE COORDINATED BY THE CONTRACTOR.
- EXISTING DRAINAGE STRUCTURES SHOWN ARE NOT TO BE DISTURBED UNLESS OTHERWISE NOTED.
- THE CONTRACTOR SHALL MATCH EXISTING SOD TYPE IN AREAS TO BE SODDED. ALL COSTS REQUIRED FOR THE ESTABLISHMENT OF SODDING, INCLUDING FERTILIZER AND WATER, ARE TO BE INCLUDED WITH PAY ITEM 575-1.

UTILITY OWNERS

- | | | |
|---|---------------------|--------------|
| 1. BRIGHTHOUSE NETWORKS | MARVIN L. USRY, JR. | 407-532-8509 |
| 2. CITY OF WINTER SPRINGS | KIP LOCKCUFF | 407-327-5989 |
| 3. PROGRESS ENERGY FLORIDA, INC. (DISTRIBUTION) | SHARON DEAR | 407-942-9709 |
| 4. PROGRESS ENERGY FLORIDA, INC. (TRANSMISSION) | KAYA HALL | 407-942-9243 |
| 5. SEMINOLE COUNTY TRAFFIC ENGINEERING | CHARLES WETZEL | 407-665-5686 |
| 6. AT&T FLORIDA | JAMES FERRELL | 407-273-5084 |

SUMMARY OF PAY ITEMS

BID ITEM NO.	DESCRIPTION	UNIT	ORIG.	FINAL
ROADWAY PAY ITEMS				
101-1	MOBILIZATION	LS	1	
102-1	MAINTENANCE OF TRAFFIC	LS	1	
104-99	PREVENTION, CONTROL & ABATEMENT OF EROSION & WATER POLLUTION	LS	1	
110-1-1	CLEARING & GRUBBING	LS	1	
120-99	REGULAR EXCAVATION	LS	1	
160-4	TYPE B STABILIZATION	SY	824	
285-709-327	OPTIONAL BASE (GROUP 09) (6" ABC-3 ONLY)	SY	667	
331-2	TYPE S ASPHALTIC CONCRETE (3")	SY	667	
337-7-3	ASPHALTIC CONCRETE FRICTION COURSE (INC. BIT) (FC-3X) (RUBBER) (1")	SY	667	
520-1-10	CONCRETE CURB & GUTTER (TYPE F)	LF	400	
520-3	CONCRETE VALLEY GUTTER	LF	100	
522-1	CONCRETE SIDEWALK, 4" THICK	SY	223	
575-1	SODDING	SY	750	
590-70A	MODIFY EXISTING IRRIGATION SYSTEMS	LS	1	
999-1	EXTEND EXISTING 12" DIP'S	LF	44	
DRAINAGE PAY ITEMS				
425-1-311	INLET (CURB TYPE P-1) (<10') (S-101 AND S-103)	EA	2	
425-2-41	MANHOLE (TYPE P-7) (<10') (S-100)	EA	1	
425-11	MODIFY EXISTING DRAINAGE STRUCTURE (MANHOLE TOP) (S-102)	EA	1	
430-11-325	CONCRETE PIPE CULVERT (SS, CLASS III) (18")	LF	20	
SIGNING AND PAVEMENT MARKINGS PAY ITEMS				
527-1	DETECTABLE WARNING ON WALKING SURFACE (RETROFIT)	EA	2	
527-99	DETECTABLE WARNING ON WALKING SURFACE	EA	3	
700-20-40	SIGN EXISTING (RELOCATE) (SINGLE POST)	AS	2	
700-20-60	SIGN EXISTING (REMOVE) (SINGLE POST)	AS	4	
706-3	REFLECTIVE PAVEMENT MARKERS (BI-DIRECTIONAL) (WHITE/RED)	EA	14	
711-11-121	SOLID TRAFFIC STRIPE, THERMOPLASTIC (6" WHITE)	LF	670	
711-11-123	SOLID TRAFFIC STRIPE, THERMOPLASTIC (12" WHITE)	LF	340	
711-11-125	SOLID TRAFFIC STRIPE, THERMOPLASTIC (24" WHITE)	LF	80	
711-11-141	SKIP TRAFFIC STRIPE, THERMOPLASTIC (6" WHITE) (2'-4')	LF	68	
711-11-170	DIRECTIONAL ARROWS, THERMOPLASTIC	EA	5	
711-11-221	SOLID TRAFFIC STRIPE, THERMOPLASTIC (6" YELLOW)	LF	42	
711-17	PAVEMENT MARKING REMOVAL (HYDROBLAST)	SF	365	
SIGNALIZATION PAY ITEMS				
630-1-12	CONDUIT (F&I) (UNDERGROUND)	LF	300	
630-1-14	CONDUIT (F&I) (DIRECTIONAL BORE)	LF	370	
632-7-1	SIGNAL CABLE (F&I)	PI	1	
635-1-11	PULL AND JUNCTION BOXES (F&I) (PULL BOX)	EA	5	
648-15-00R	RELOCATE EXISTING POLE	EA	1	
648-99	MAST ARM FOUNDATIONS (F&I)	LF	8	
660-2-102	LOOP ASSEMBLY TYPE B (F&I)	AS	4	
690-32-2	POLE REMOVAL (SHALLOW) (BOLT ON ATTACHMENT)	EA	1	
690-90	REMOVE CABLING AND CONDUIT	PI	1	
690-100	REMOVE MISCELLANEOUS SIGNAL EQUIPMENT	PI	1	

REVISIONS

DATE	BY	DESCRIPTION

ENGINEER OF RECORD,
FURSAN S. MUNJED, P.E.
 PROFESSIONAL ENGINEER CERTIFICATE NO. 5446
 PEGASUS ENGINEERING, LLC.
 301 WEST STATE ROAD 434, SUITE 309
 WINTER SPRINGS, FLORIDA 32708
 CERTIFICATE OF AUTHORIZATION NO. 27770



CITY OF WINTER SPRINGS
 FLORIDA

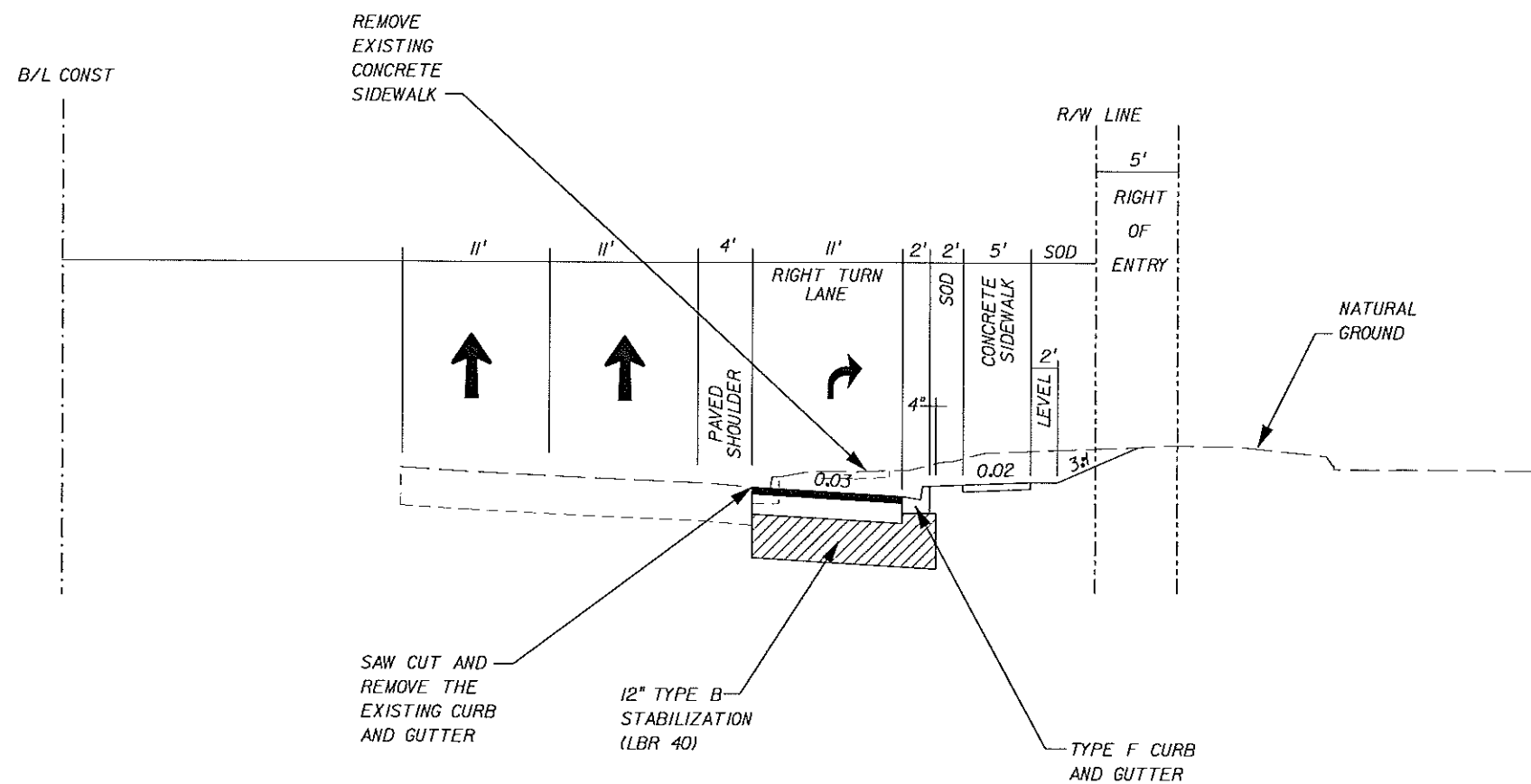
ROAD NO.	PROJECT NO.
SR 434	WSC-006-1



SR 434 AND VISTAWILLA DRIVE
 INTERSECTION IMPROVEMENTS
 GENERAL NOTES AND QUANTITIES

SHEET
 NO.

2





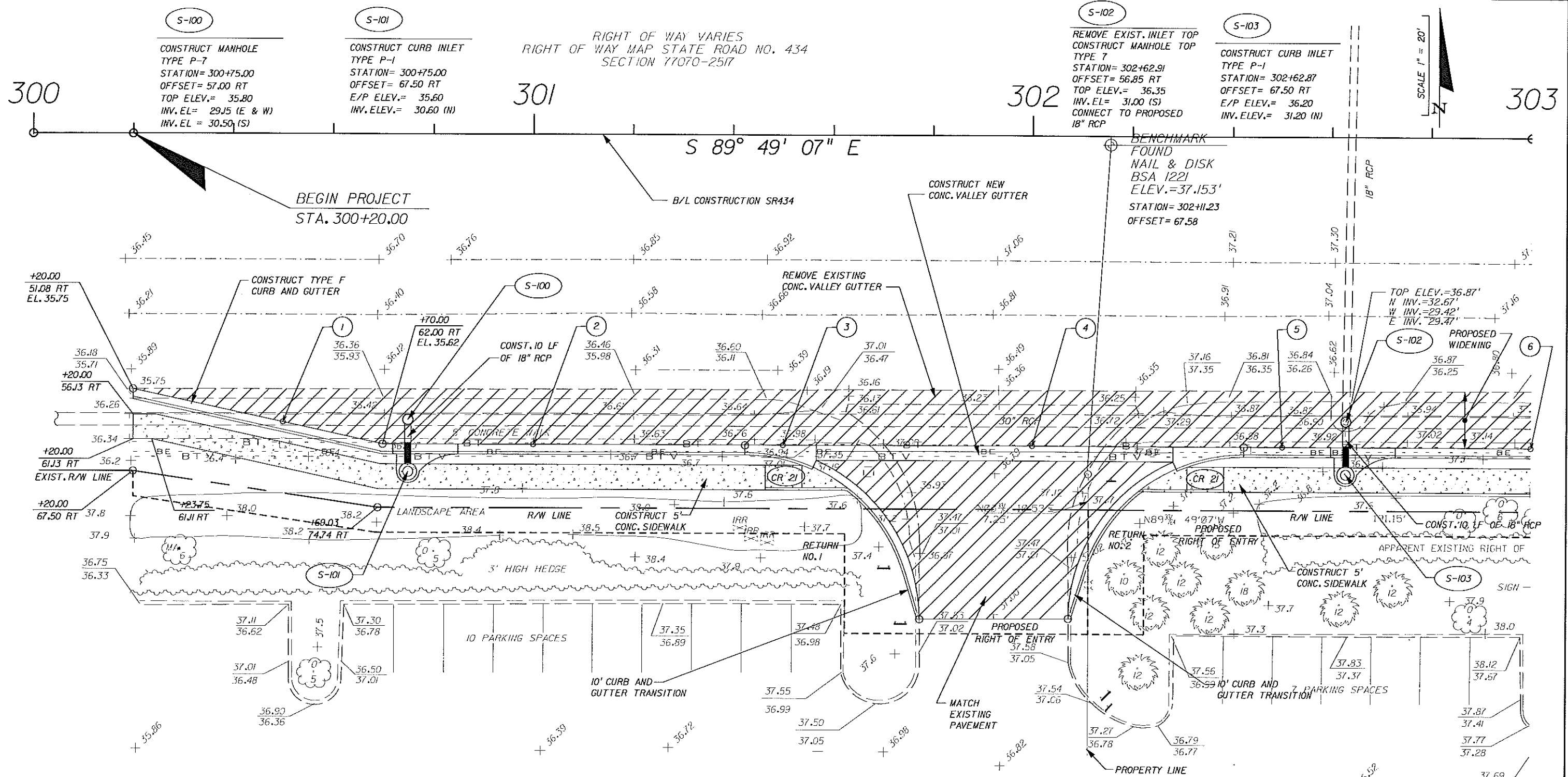
TYPICAL SECTION

SR 434 AT VISTAWILLA DRIVE
 STA. 300+20.00 TO STA. 304+37.71

PAVEMENT WIDENING

OPTIONAL BASE GROUP 9 (6" ABC-3 ONLY) WITH
 TYPE S STRUCTURAL COURSE (3")
 AND FRICTION COURSE FC-3 (1") (RUBBER)

REVISIONS			ENGINEER OF RECORD, FURSAN S. MUNJED, P.E. PROFESSIONAL ENGINEER CERTIFICATE NO. 51446 PEGASUS ENGINEERING, LLC. 301 WEST STATE ROAD 434, SUITE 309 WINTER SPRINGS, FLORIDA 32708 CERTIFICATE OF AUTHORIZATION NO. 27770		CITY OF WINTER SPRINGS FLORIDA			SR 434 AND VISTAWILLA DRIVE INTERSECTION IMPROVEMENTS TYPICAL SECTIONS	SHEET NO.
DATE	BY	DESCRIPTION			ROAD NO.	PROJECT NO.			3
					SR 434	WSC-006-1			



LEGEND

- PAVEMENT WIDENING OR PAVEMENT RECONSTRUCTION
- CONCRETE SIDEWALK

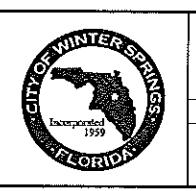
RETURN NO. 1 R=35'		
	PC	PT
STATION	301+42.48	301+77.48
OFFSET	62.00 RT	96.81 RT
ELEVATION	35.83	MATCH EXIST. (37.02)

RETURN NO. 2 R=35'		
	PC	PT
STATION	302+07.33	302+42.33
OFFSET	96.65 RT	62.00 RT
ELEVATION	MATCH EXIST. (37.03)	36.13

PROPOSED GRADING						
POINT NO.	1	2	3	4	5	6
STATION	300+50	301+00	301+50	302+00	302+50	303+00
OFFSET	57.63' RT	62.00 RT	62.00 RT	62.00 RT	62.00 RT	62.00 RT
ELEVATION	35.68	35.70	35.85	36.00	36.15	36.30

REVISIONS		
DATE	BY	DESCRIPTION

ENGINEER OF RECORD,
FURSAN S. MUNJED, P.E.
 PROFESSIONAL ENGINEER CERTIFICATE NO. 5446
 PEGASUS ENGINEERING, LLC.
 301 WEST STATE ROAD 434, SUITE 309
 WINTER SPRINGS, FLORIDA 32708
 CERTIFICATE OF AUTHORIZATION NO. 27770

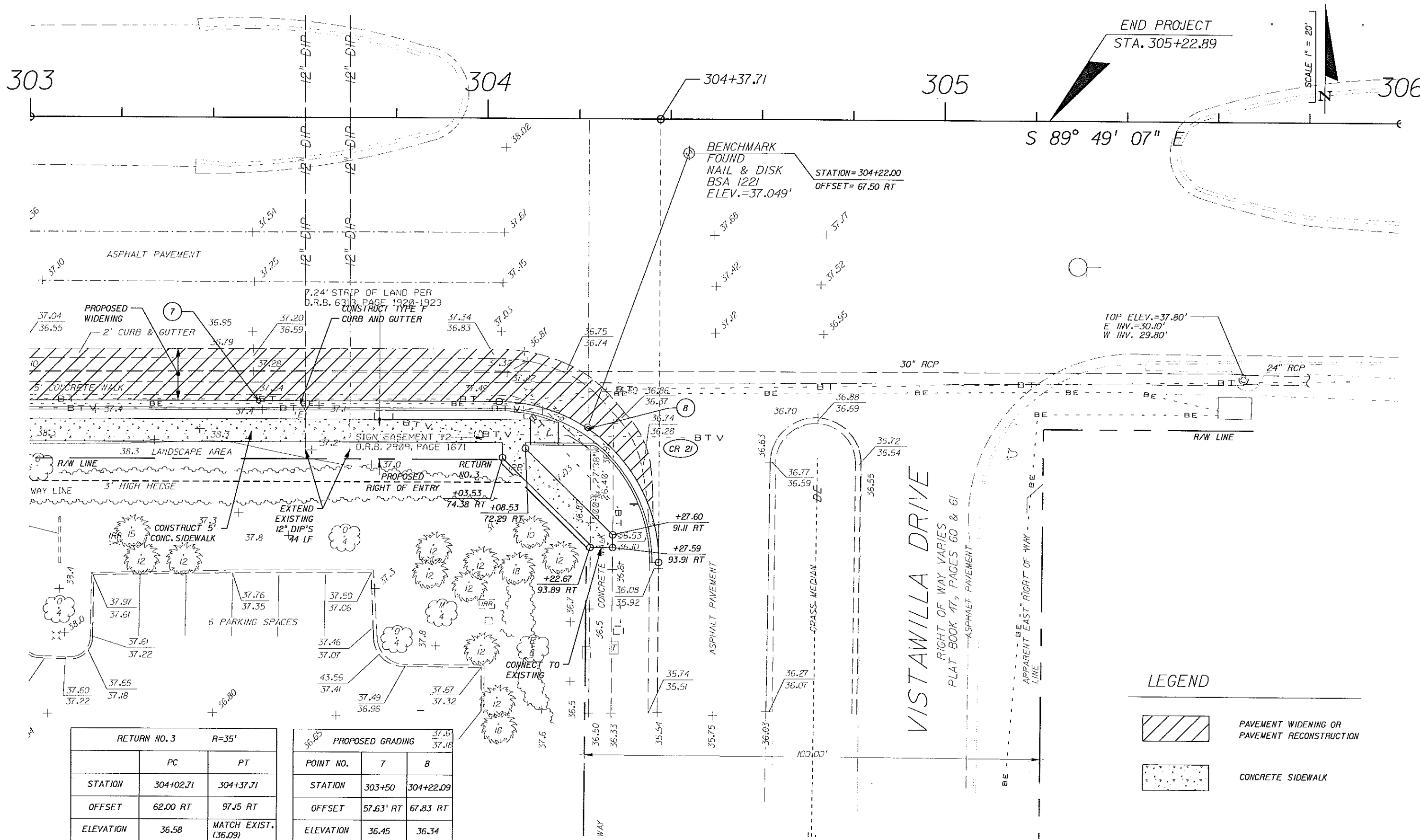


CITY OF WINTER SPRINGS
 FLORIDA
 ROAD NO. SR 434
 PROJECT NO. WSC-006-1



SR 434 AND VISTAWILLA DRIVE
 INTERSECTION IMPROVEMENTS
 PLAN SHEET

SHEET NO.
 4



END PROJECT
STA. 305+22.89

SCALE 1" = 20'

S 89° 49' 07" E



BENCHMARK
FOUND
NAIL & DISK
BSA 1221
ELEV.=37.049'
STATION=304+22.00
OFFSET=67.50 RT

TOP ELEV.=37.80'
E INV.=30.10'
W INV.=29.80'

RETURN NO. 3		R=35'
	PC	PT
STATION	304+02.71	304+37.71
OFFSET	62.00 RT	97.15 RT
ELEVATION	36.58	MATCH EXIST. (36.09)

PROPOSED GRADING		37.49 37.18
POINT NO.	7	8
STATION	303+50	304+22.09
OFFSET	57.63' RT	67.83 RT
ELEVATION	36.45	36.34

LEGEND

-  PAVEMENT WIDENING OR PAVEMENT RECONSTRUCTION
-  CONCRETE SIDEWALK

REVISIONS		
DATE	BY	DESCRIPTION

ENGINEER OF RECORD:
FURSAN S. MUNJED, P.E.
PROFESSIONAL ENGINEER CERTIFICATE NO. 51446
PEGASUS ENGINEERING, LLC.
301 WEST STATE ROAD 434, SUITE 309
WINTER SPRINGS, FLORIDA 32708
CERTIFICATE OF AUTHORIZATION NO. 27770

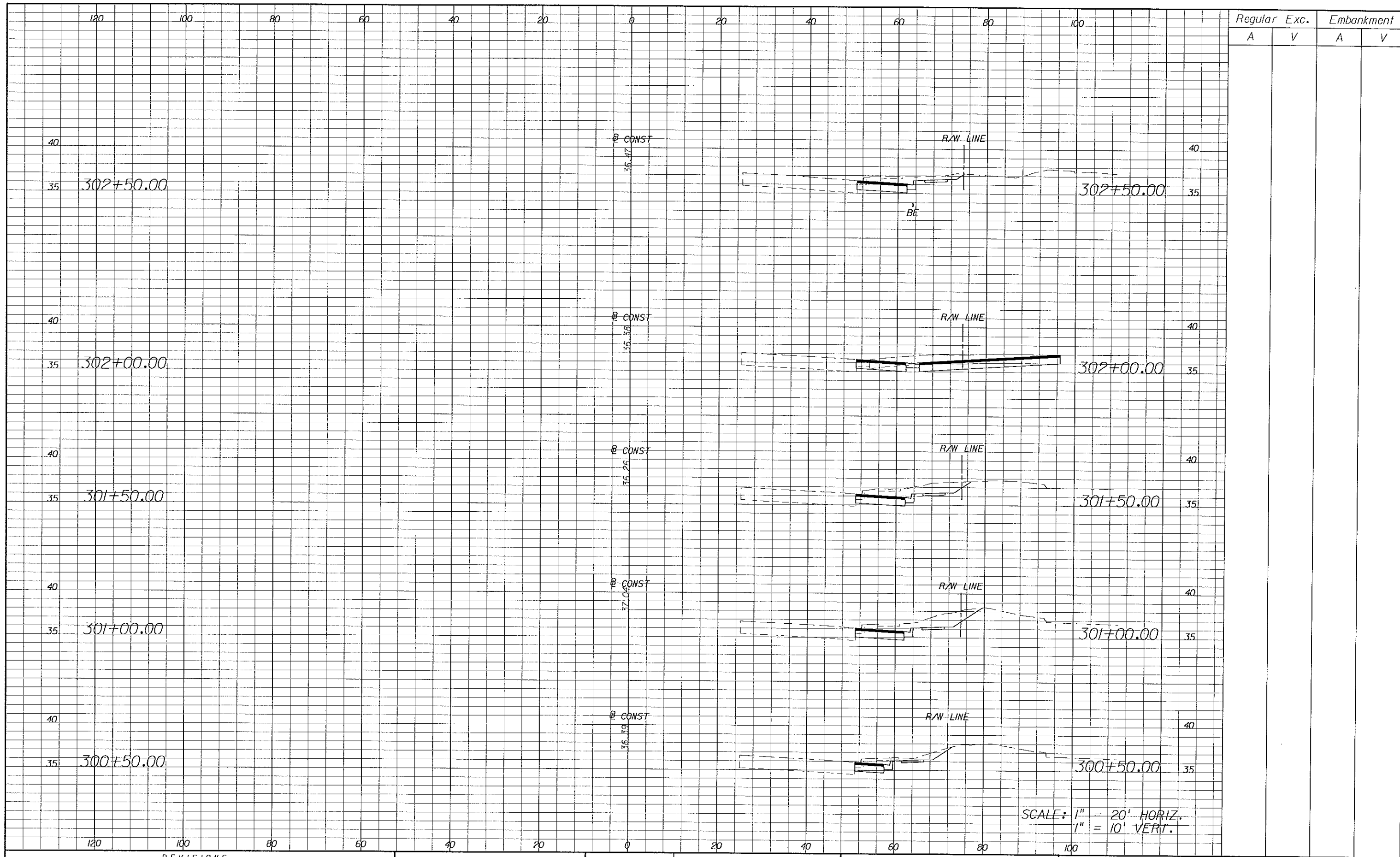


CITY OF WINTER SPRINGS
FLORIDA
ROAD NO. SR 434
PROJECT NO. WSC-006-1



SR 434 AND VISTAWILLA DRIVE
INTERSECTION IMPROVEMENTS
PLAN SHEET

SHEET NO.
5



Regular		Exc.		Embankment	
A	V	A	V	A	V

REVISIONS	
DATE	DESCRIPTION

ENGINEER OF RECORD:
FURSAN S. MUNJED, P.E.
 PROFESSIONAL ENGINEER CERTIFICATE NO. 51446
 PEGASUS ENGINEERING, LLC.
 301 WEST STATE ROAD 434, SUITE 309
 WINTER SPRINGS, FLORIDA 32709
 CERTIFICATE OF AUTHORIZATION NO. 27770

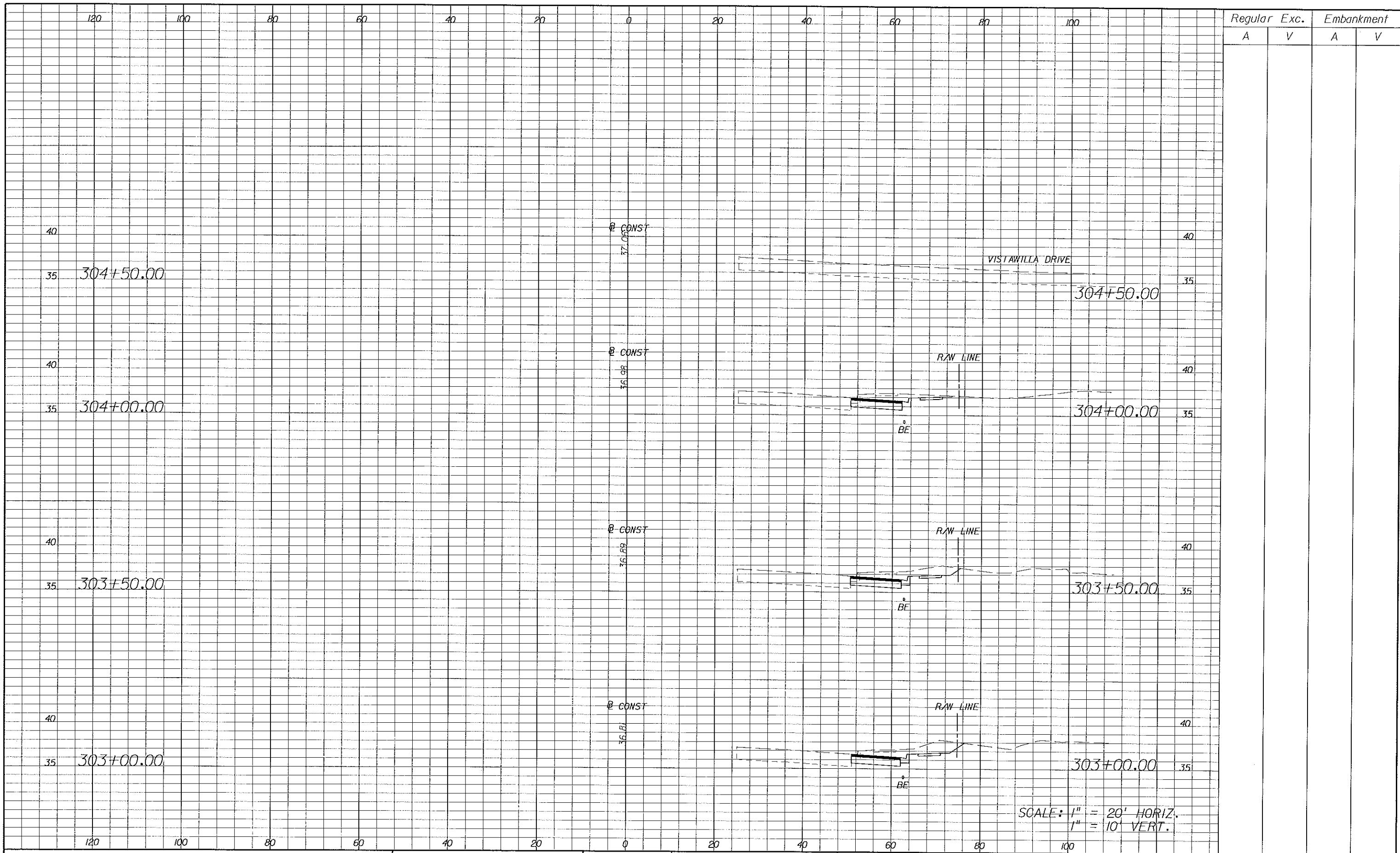


CITY OF WINTER SPRINGS
 FLORIDA
 ROAD NO. SR 434
 PROJECT NO. WSC-006-1



SR 434 AND VISTAWILLA DRIVE
 INTERSECTION IMPROVEMENTS
 ROADWAY CROSS SECTIONS

SHEET NO.
 6



Regular		Exc.		Embankment	
A	V	A	V	A	V

REVISIONS		
DATE	BY	DESCRIPTION

ENGINEER OF RECORD,
FURSAN S. MUNJED, P.E.
 PROFESSIONAL ENGINEER CERTIFICATE NO. 51446
 PEGASUS ENGINEERING, LLC.
 301 WEST STATE ROAD 434, SUITE 309
 WINTER SPRINGS, FLORIDA 32708
 CERTIFICATE OF AUTHORIZATION NO. 27710



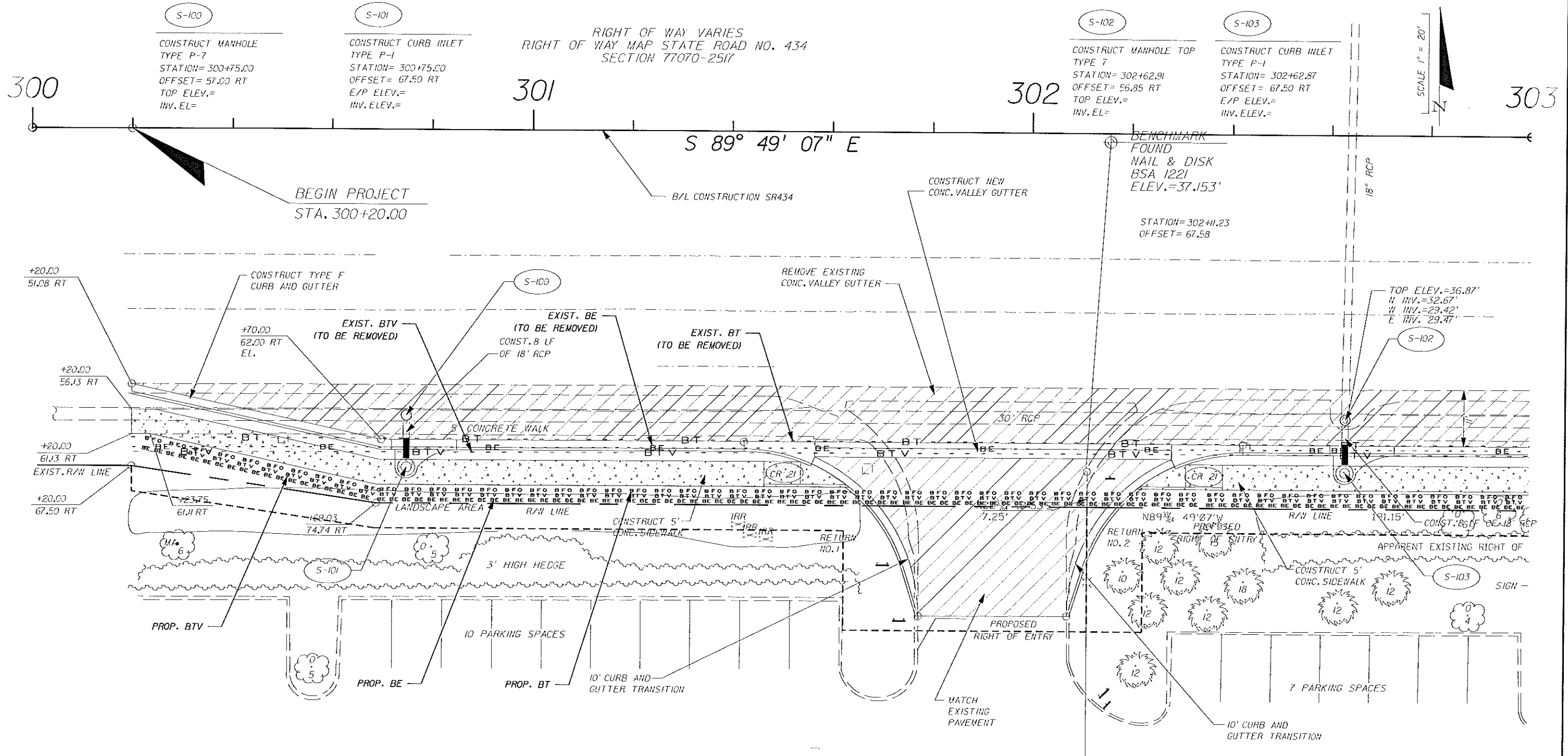
CITY OF WINTER SPRINGS
 FLORIDA

ROAD NO.	PROJECT NO.
SR 434	WSC-006-1

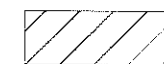



SR 434 AND VISTAWILLA DRIVE
 INTERSECTION IMPROVEMENTS
 ROADWAY CROSS SECTIONS

SHEET NO.
 7



LEGEND

-  PAVEMENT WIDENING OR PAVEMENT RECONSTRUCTION
-  CONCRETE SIDEWALK

RETURN NO. 1 R=35'		
	PC	PT
STATION	301+42.48	301+77.48
OFFSET	62.00 RT	96.81 RT
ELEVATION		

RETURN NO. 2 R=35'		
	PC	PT
STATION	302+07.33	302+42.33
OFFSET	96.65 RT	62.00 RT
ELEVATION		

REVISIONS		
DATE	BY	DESCRIPTION

ENGINEER OF RECORD:
FURSAH S. MUNJED, P.E.
 PROFESSIONAL ENGINEER CERTIFICATE NO. 51446
 PEGASUS ENGINEERING, LLC.
 301 WEST STATE ROAD 434, SUITE 309
 WINTER SPRINGS, FLORIDA 32708
 CERTIFICATE OF AUTHORIZATION NO. 27770



CITY OF WINTER SPRINGS
 FLORIDA

ROAD NO.	PROJECT NO.
SR 434	WSC-006-1



SR 434 AND VISTAWILLA DRIVE
 INTERSECTION IMPROVEMENTS
 UTILITY ADJUSTMENT SHEET

SHEET NO.
 8

303

304

305

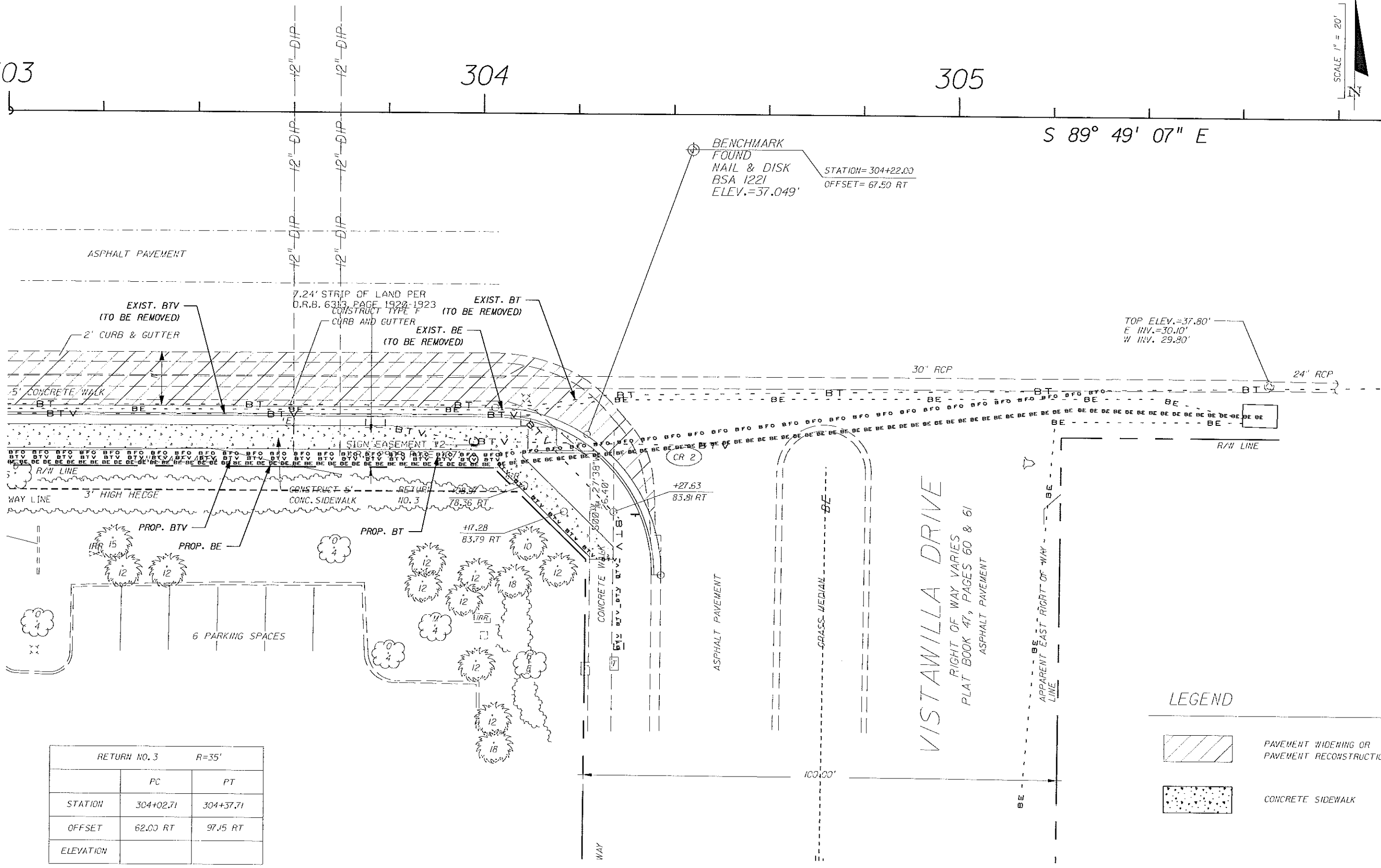
306

S 89° 49' 07" E



BENCHMARK FOUND
NAIL & DISK
BSA 1221
ELEV.=37.049'
STATION=304+22.00
OFFSET=67.50 RT

TOP ELEV.=37.80'
E INV.=30.10'
W INV.=29.90'



RETURN NO. 3		R=35'
	PC	PT
STATION	304+02.71	304+37.71
OFFSET	62.00 RT	97.15 RT
ELEVATION		

LEGEND

- PAVEMENT WIDENING OR PAVEMENT RECONSTRUCTION
- CONCRETE SIDEWALK

REVISIONS

DATE	BY	DESCRIPTION

ENGINEER OF RECORD:
FURSAN S. MUNJED, P.E.
 PROFESSIONAL ENGINEER CERTIFICATE NO. 51446
 PEGASUS ENGINEERING, LLC.
 301 WEST STATE ROAD 434, SUITE 309
 WINTER SPRINGS, FLORIDA 32708
 CERTIFICATE OF AUTHORIZATION NO. 27770



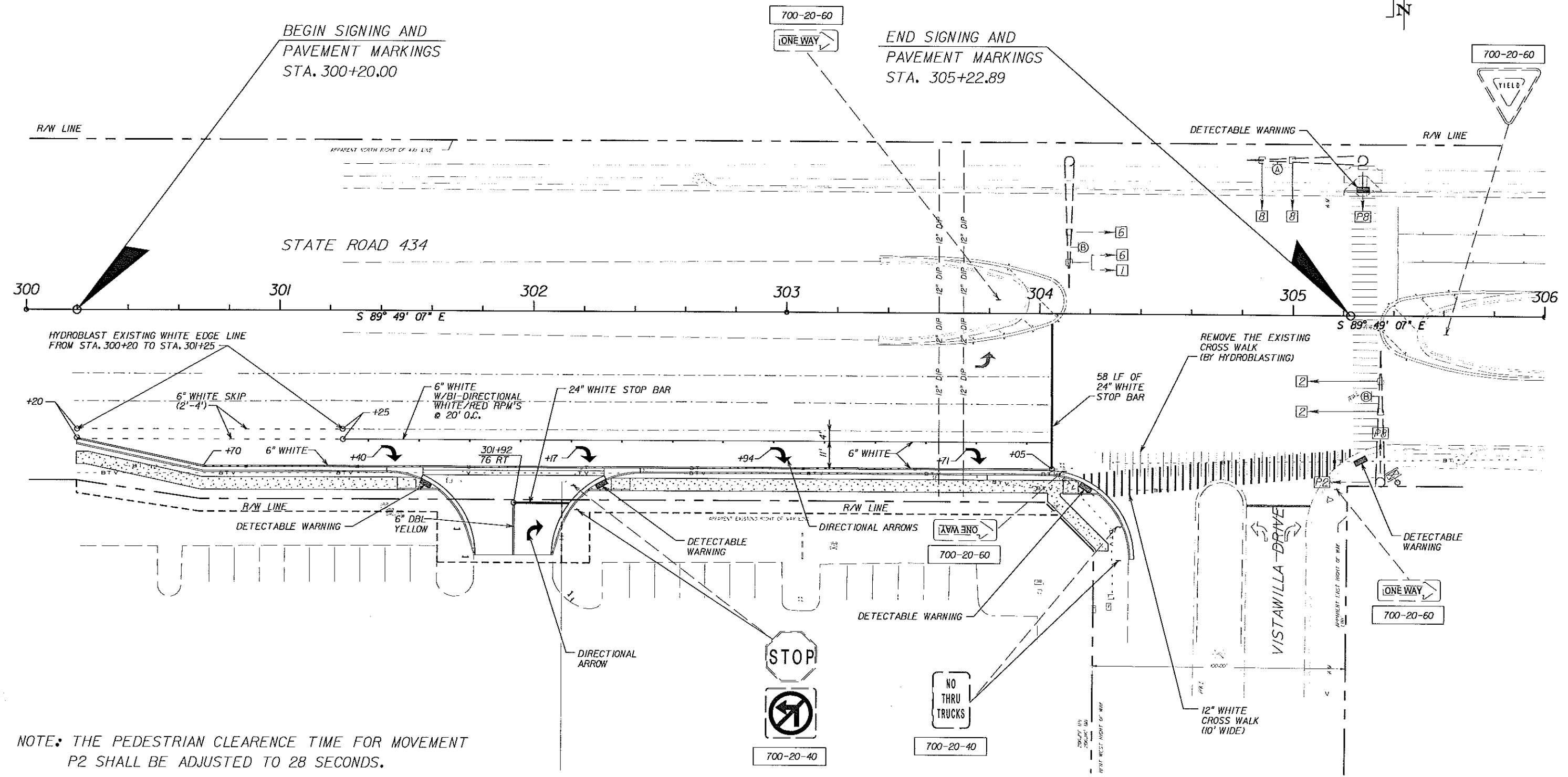
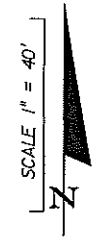
CITY OF WINTER SPRINGS
 FLORIDA

ROAD NO.	PROJECT NO.
SR 434	WSC-006-1



SR 434 AND VISTAWILLA DRIVE
 INTERSECTION IMPROVEMENTS
 UTILITY ADJUSTMENT SHEET

SHEET NO.
 9



NOTE: THE PEDESTRIAN CLEARANCE TIME FOR MOVEMENT P2 SHALL BE ADJUSTED TO 28 SECONDS.

REVISIONS	
DATE	DESCRIPTION

ENGINEER OF RECORD:
 FURSAN S. MUNJED, P.E.
 PROFESSIONAL ENGINEER CERTIFICATE NO. 51446
 PEGASUS ENGINEERING, LLC.
 301 WEST STATE ROAD 434, SUITE 309
 WINTER SPRINGS, FLORIDA 32708
 CERTIFICATE OF AUTHORIZATION NO. 21770



CITY OF WINTER SPRINGS
 FLORIDA

ROAD NO.	PROJECT NO.
SR 434	WSC-006-1



SR 434 AND VISTAWILLA DRIVE
 INTERSECTION IMPROVEMENTS
 SIGNING & PAVEMENT MARKINGS

SHEET NO.
 10

GENERAL

PAY ITEM NOTES

1. FOR ADDITIONAL DETAILS OF TRAFFIC SIGNAL INSTALLATIONS FOR THIS PROJECT SEE FDOT DESIGN STANDARDS, DATED 2008, INDEX NOS. 17356, 17721, 17727, 17736, 17764, 17781, 17784, 17841, AND 17870.
2. THE CONTRACTOR SHALL CONTACT CITY OF WINTER SPRINGS ENGINEERING, SEMINOLE COUNTY TRAFFIC ENGINEERING AND FDOT TWO BUSINESS DAYS PRIOR TO BEGINNING ANY WORK IN THE INTERSECTION. MAINTAINING AGENCY: SEMINOLE COUNTY
3. THE CONTRACTOR SHALL NOTIFY ALL UTILITIES AT LEAST 48 HOURS IN ADVANCE OF ANY OPERATION THAT MAY CONFLICT WITH OVERHEAD OR UNDERGROUND UTILITIES.
4. THE CONTRACTOR SHALL BE RESPONSIBLE FOR LOCATING ALL UTILITIES PRIOR TO CONSTRUCTION.
5. CONTRACTOR SHALL NOTIFY SEMINOLE COUNTY TRAFFIC ENGINEERING 24 HRS PRIOR TO DESTROYING EXISTING ROADWAY SENSORS. AT NO TIME IS THE CONTRACTOR TO CHANGE ANY SIGNAL TIMINGS. SEMINOLE COUNTY WILL MAINTAIN ALL SIGNAL TIMINGS BEFORE, DURING, AND AFTER CONSTRUCTION.
6. THE MAINTENANCE OF SIGNALS SHALL REMAIN THE RESPONSIBILITY OF THE CONTRACTOR, FROM THE TIME CONTRACT WORK BEGINS UNTIL FINAL ACCEPTANCE BY SEMINOLE COUNTY, ON A BY INTERSECTION BASIS. THE CONTRACTOR SHALL HAVE A I.M.S.A. LEVEL 2 SIGNAL TECHNICIAN ON SITE THROUGH ALL PHASES OF CONSTRUCTION AND ON CALL WITH A 2 HR, MAXIMUM RESPONSE TIME.
7. TRAFFIC SHALL BE MAINTAINED IN ACCORDANCE WITH THE FDOT DESIGN STANDARDS, DATED 2006, ATTENTION IS DIRECTED TO THE INDEX 600 SERIES, PER INDEX NUMBERS LISTED.
8. SIGNAL CABLE AND LOOP WIRE ARE NOT TO BE IN THE SAME PULL BOX.
9. LANE CLOSURES WILL BE PERMITTED ONLY DURING ACTIVE WORK PERIODS WHEN THE LANE CLOSURE IS NEEDED TO ACCOMPLISH THE WORK. NO LONG TERM LANE CLOSURES WILL BE PERMITTED. NO LANE CLOSURES WILL BE PERMITTED BETWEEN THE HOURS OF 7:00 AM - 9:00 PM.
10. ALL INSTALLATIONS TO BE AS PER SEMINOLE COUNTY STANDARDS.
11. ALL EQUIPMENT/MATERIALS TO BE APPROVED BY SEMINOLE COUNTY TRAFFIC ENGINEERING.
 - A. ALL SIGNAL HEADS TO BE CAST ALUMINUM WITH TUNNEL VISORS.
 - B. ALL PULL BOXES TO BE NON-METALLIC LOCATED A MINIMUM OF 5' FROM RADII AND 10' OFF EDGE OF PAVEMENT, UNLESS OTHERWISE NOTED.
12. AT THE TIME OF FINAL INSPECTION THE CONTRACTOR SHALL FURNISH CITY OF WINTER SPRINGS, SEMINOLE COUNTY AND FDOT ONE SET EACH OF CONSTRUCTION AS-BUILT PLANS.
13. CONTRACTOR IS TO INSURE THAT A 4 FOOT BY 4 FOOT FLAT LANDING AREA OF SIDEWALK IS ADJACENT TO ALL PED BUTTONS FOR PEDESTRIAN ACCESS.
14. THE USE OF "JONES" PLUGS IS NOT PERMITTED.
15. 3 SPARE CONDUCTORS ARE TO BE RUN TO THE FURTHEST PEDESTRIAN SIGNAL HEAD.
16. THE COST OF GROUNDING ELECTRODE SHALL BE INCLUDED UNDER THE PAY ITEM OF POLES, CABINETS, PEDESTALS, ETC. IN ACCORDANCE WITH THE FDOT STANDARD SPECIFICATIONS FOR ROAD AND BRIDGE CONSTRUCTION DATED 2007 AND ALL SUPPLEMENTS AND REVISIONS THERE TO.
17. ANY NEW OR EXISTING STRIPING CUT BECAUSE OF LOOP PLACEMENT SHALL BE RE-STRIPED PRIOR TO ACCEPTANCE.
18. THE CONTRACTOR SHALL HAND DIG THE FIRST 4' AT EACH POLE LOCATION AND THE FIRST 2' AT EACH PEDESTAL LOCATION TO VERIFY NO UTILITY CONFLICTS.
19. ALL COMMUNICATION CABLE SHALL BE INSTALLED IN SEPARATE PULL BOXES.
20. ALL NEW LOOP DETECTORS ARE TO BE INSTALLED IN THE CABINET PRIOR TO CUTTING THE EXISTING LOOPS.
21. ALL PEDESTRIAN SIGNALS SHALL BE 16" LED, COUNTDOWN TYPE.
22. THE CONTRACTOR SHALL BE RESPONSIBLE FOR SUPPLYING APPROVED SHOP DRAWINGS SHOWING THE BOLT PATTERN AND ARM ORIENTATION PRIOR TO THE PRE-DRILL SHAFT MEETING.

23. THE CONTRACTOR IS REQUIRED TO INSPECT THE INSTALLATION OF THE TRAFFIC SIGNALS IN ACCORDANCE WITH FDOT SPECIFICATION 105-5.10. THE CONTRACTOR SHALL COORDINATE THE FINAL ACCEPTANCE INSPECTION IN ACCORDANCE WITH FDOT SPECIFICATION 611-2-2 WITH THE ENGINEER AT LEAST TEN DAYS IN ADVANCE. THE (MAINTAINING AGENCY) AND RAY MARLIN AT (386) 943-5318 SHOULD ALSO BE CONTACTED TEN DAYS BEFORE THE INSPECTION IT TO BE PERFORMED SO THEY MAY BE PRESENT.
24. THE LOCAL PERMIT MANAGER MUST BE INFORMED TWO BUSINESS DAYS BEFORE ANY DIRECTIONAL BORES.
25. EXISTING LOOPS DAMAGED BY THE CONTRACTOR DURING CONSTRUCTION TO BE REPLACED BY THE CONTRACTOR AT THE CONTRACTOR'S EXPENSE.
26. COLOR CODES FOR MAINTAINING AGENCIES TO BE USED.
27. THE CONTRACTOR IS TO ENSURE THAT A 4' X 4' FLAT LANDING AREA (522-1) IS ADJACENT TO ALL PED BUTTONS FOR PEDESTRIAN ACCESS.
28. THREE (3) SPARE CONDUCTORS ARE TO BE RUN TO THE FURTHEST PEDESTRIAN SIGNAL HEAD.
29. ALL PEDESTRIAN SIGNALS SHALL BE 16" LED, COUNTDOWN TYPE.
30. THE CONTRACTOR SHALL BE RESPONSIBLE FOR HIRING A CERTIFIED DRILLED SHAFT CTQP LEVEL 1 CONSTRUCTION ENGINEERING AND INSPECTION (CEI) FIRM, AND A CONCRETE TESTING LABORATORY FOR THE PURPOSE OF INSPECTING ALL DRILLED SHAFT INSTALLATIONS PER FDOT STANDARDS. THE FIRM SHALL THEN SUBMIT A SIGNED AND SEALED REPORT VERIFIED BY THE P.E. IN RESPONSIBLE CHARGE OF THE DRILLED SHAFT INSPECTOR TO THE DEPARTMENT FOR APPROVAL. FAILURE TO OBTAIN THESE SERVICES PRIOR TO THE CONSTRUCTION OF THE DRILLED SHAFT(S) SHALL RESULT IN THE REJECTION OF THE DRILLED SHAFT(S).
31. CONTRACTOR SHALL CONTACT JULIA BLACKWELDER, FDOT AT (386) 740-3454 TO SCHEDULE INITIAL/ POST-CONSTRUCTION INSPECTION ON WAST ARMS, ONE MONTH PRIOR TO COMPLETION OF JOB.

- 630-1-XX CONDUIT FOR ELECTRICAL POWER SERVICE TO BE 1-1/2" INCH RIGID GALVANIZED. ALL OTHER CONDUIT TO BE 2" (MINIMUM) SCHEDULE 40 P.V.C..
- PAYMENT SHALL INCLUDE THE COST OF TRENCHING AND ALL CONDUIT IN TRENCH. IT SHOULD BE NOTED THAT NO TEST BORINGS WERE MADE WHERE CONDUIT RUNS ARE TO BE INSTALLED.
- 632-7-1 BEFORE ORDERING SIGNAL CABLE, THE CONTRACTOR SHALL VERIFY COLOR CODES WITH SEMINOLE COUNTY. ALL WIRING TO BE PER SEMINOLE COUNTY SPECIFICATIONS.
- 635-1-II PULL BOXES SHALL BE NON-METALLIC, TRAFFIC BEARING BOXES SPECIFICATIONS SECTION B630-3.3, PARAGRAPH 5, IS HEREWITH EXPANDED TO INCLUDE PULL BOXES. PULL BOXES SHALL BE INSTALLED AT INTERVALS OF NOT MORE THAN 200 FEET AND SHALL NOT BE PLACED IN ANY DRIVEWAYS.
- PULL BOX COVERS SHALL BE FDOT APPROVED OF NON-METALLIC CONSTRUCTION WITH RECESSED COVER LOGO "TRAFFIC SIGNAL" OR "FIBER OPTIC" AS APPROPRAITE.
- 648-99 INCLUDES THE COST OF RELOCATING THE PEDESTRIAN SIGNAL, SIGNS, ETC.
- FIELD TESTS THE CONTRACTOR IS REQUIRED TO INSPECT THE TRAFFIC SIGNAL IN ACCORDANCE WITH STANDARD SPECIFICATION 105-5.10.
- THE CONTRACTOR IS TO CONTACT SEMINOLE COUNTY TRAFFIC ENGINEERING AND RAY MARLIN AT (386) 943-5318 TEN (10) DAYS BEFORE INSPECTION IS PERFORMED.
- SHOULD THE CONTRACTOR REQUEST AN INSPECTION AND THE CONTRACTOR IS NOT PREPARED FOR THE INSPECTION, THE CONTRACTOR WILL BE BACK CHARGED FOR THE CONSULTANT INSPECTOR'S TIME.
- THE CONTRACTOR WILL BE REQUIRED TO PROVIDE A 90 DAY WARRANTY PERIOD AS OUTLINED IN FDOT STANDARD SPECIFICATIONS FOR ROAD AND BRIDGE CONSTRUCTION DATED 2007.

REVISIONS

DATE	BY	DESCRIPTION

ENGINEER OF RECORD,
 FURSAN S. MUNJED, P.E.
 PROFESSIONAL ENGINEER CERTIFICATE NO. 51446
 PEGASUS ENGINEERING, L.L.C.
 301 WEST STATE ROAD 434, SUITE 309
 WINTER SPRINGS, FLORIDA 32708
 CERTIFICATE OF AUTHORIZATION NO. 27770



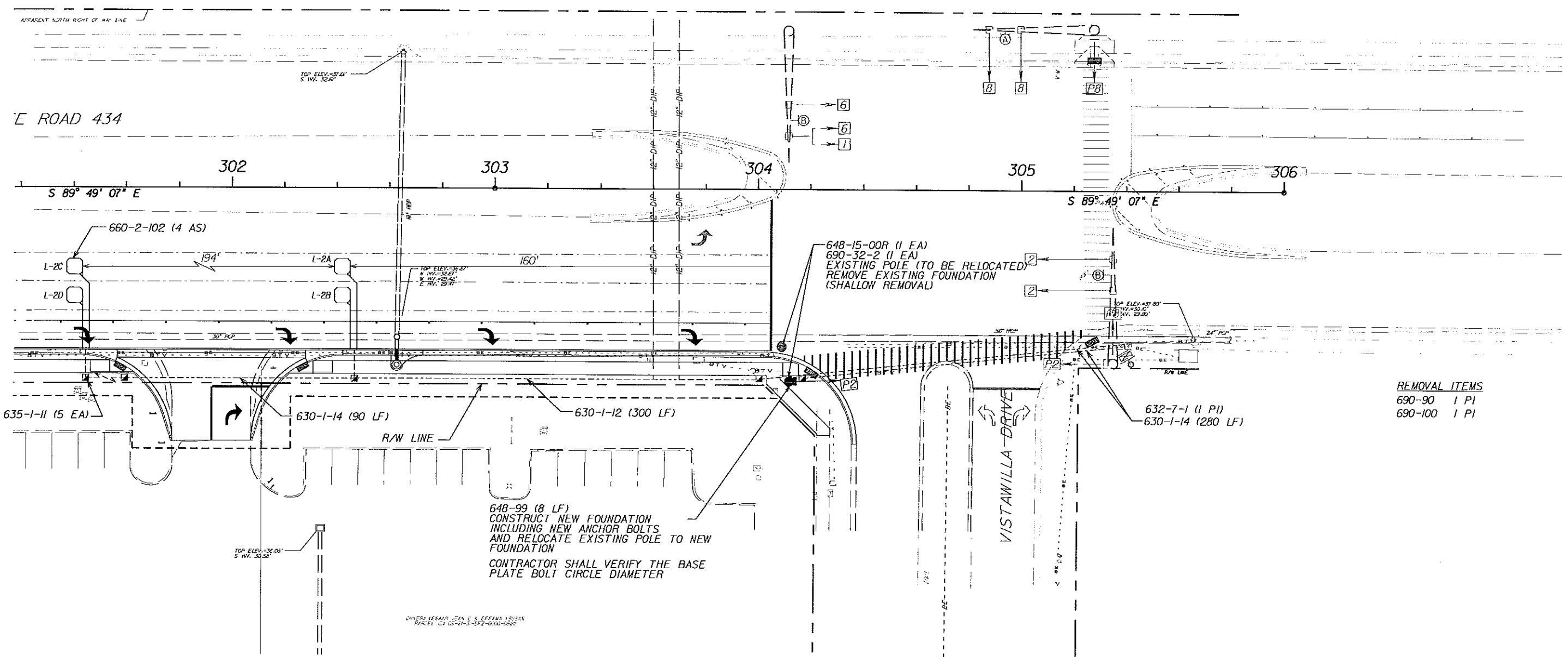
CITY OF WINTER SPRINGS
 FLORIDA

ROAD NO.	PROJECT NO.
SR 434	WSC-006-1



SR 434 AND VISTAWILLA DRIVE
 INTERSECTION IMPROVEMENTS
 GENERAL NOTES

SHEET NO.
 11



REMOVAL ITEMS
 690-90 1 PI
 690-100 1 PI
 632-7-1 (1 PI)
 630-1-14 (280 LF)

648-99 (8 LF)
 CONSTRUCT NEW FOUNDATION
 INCLUDING NEW ANCHOR BOLTS
 AND RELOCATE EXISTING POLE TO NEW
 FOUNDATION
 CONTRACTOR SHALL VERIFY THE BASE
 PLATE BOLT CIRCLE DIAMETER

OWNER: LEXAR, DAN C & EFFANA YUSUF
 PARCEL ID: 15-21-3-477-000-250

REVISIONS		
DATE	BY	DESCRIPTION

ENGINEER OF RECORD:
FURSAN S. MUNJED, P.E.
 PROFESSIONAL ENGINEER CERTIFICATE NO. 51446
 PEGASUS ENGINEERING, LLC.
 301 WEST STATE ROAD 434, SUITE 309
 WINTER SPRINGS, FLORIDA 32708
 CERTIFICATE OF AUTHORIZATION NO. 27170



CITY OF WINTER SPRINGS
 FLORIDA

ROAD NO. SR 434	PROJECT NO. WSC-006-1
--------------------	--------------------------



SR 434 AND VISTAWILLA DRIVE
 INTERSECTION IMPROVEMENTS
 SIGNALIZATION PLAN

SHEET NO.
 12

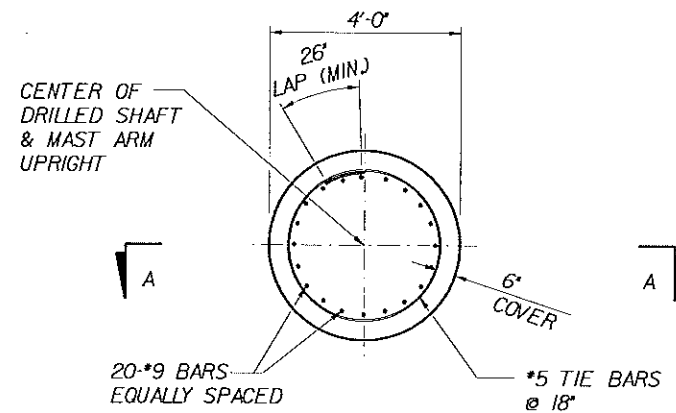
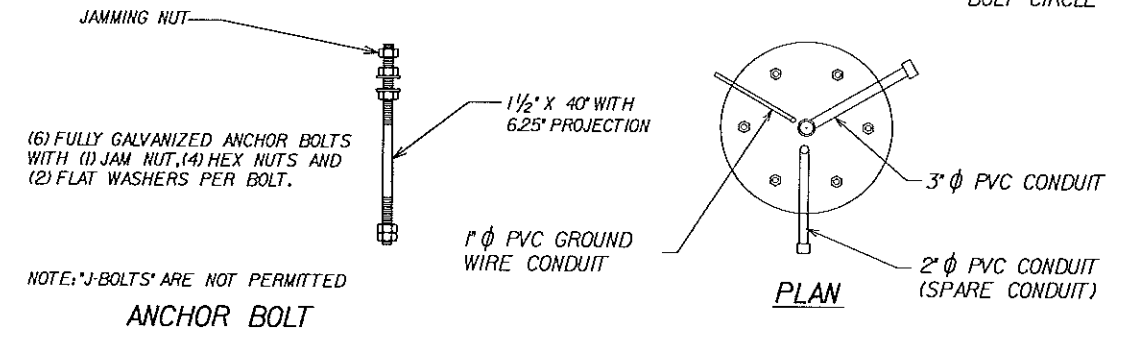
FOUNDATION CONSTRUCTION NOTES

- 1) Natural slurry shall not be relied upon to prevent caving of soils and maintaining an open hole. Otherwise, drilled shafts shall be constructed in accordance with Section 455
- 2) The Contractor shall be prepared to use temporary casing or other methods as needed to control artesian water levels.

FOUNDATION MATERIALS

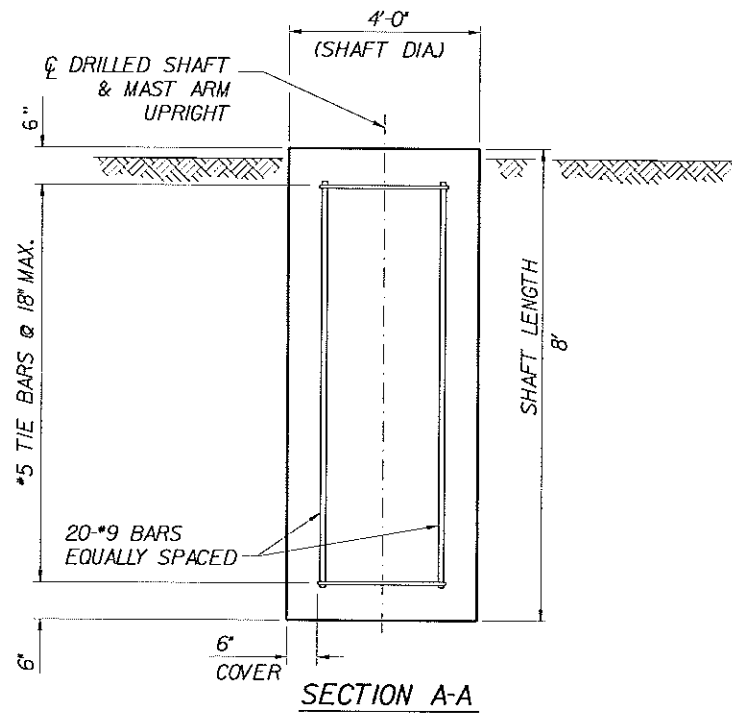
- 1) Reinforcing Steel shall be ASTM A615, Grade 60.
- 2) Concrete shall be FDOT Class IV (Drilled Shaft) with a minimum 28-day compressive strength of 4000 psi.
- 3) Grout shall have a minimum 28-day compressive strength of 5000 psi and shall meet the requirements of FDOT Specification Section 934.

NOTE:
ORIENT ALL CONDUIT
AS REQUIRED TO AVOID
BOLT CIRCLE

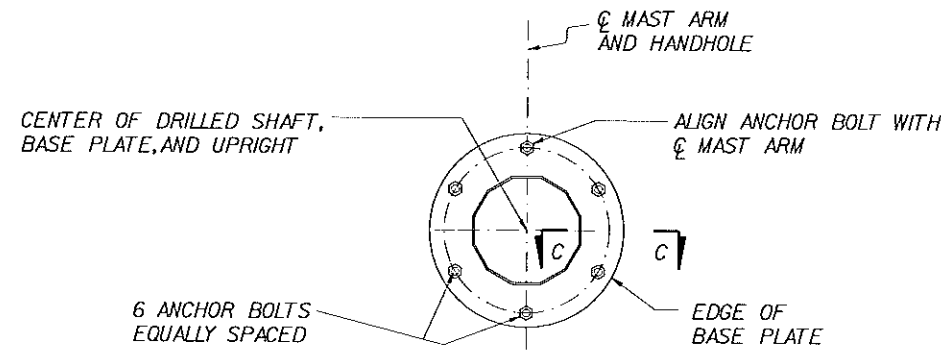


FOUNDATION PLAN

NOTE: 6" MIN. COVER ON SHAFT REINFORCEMENT

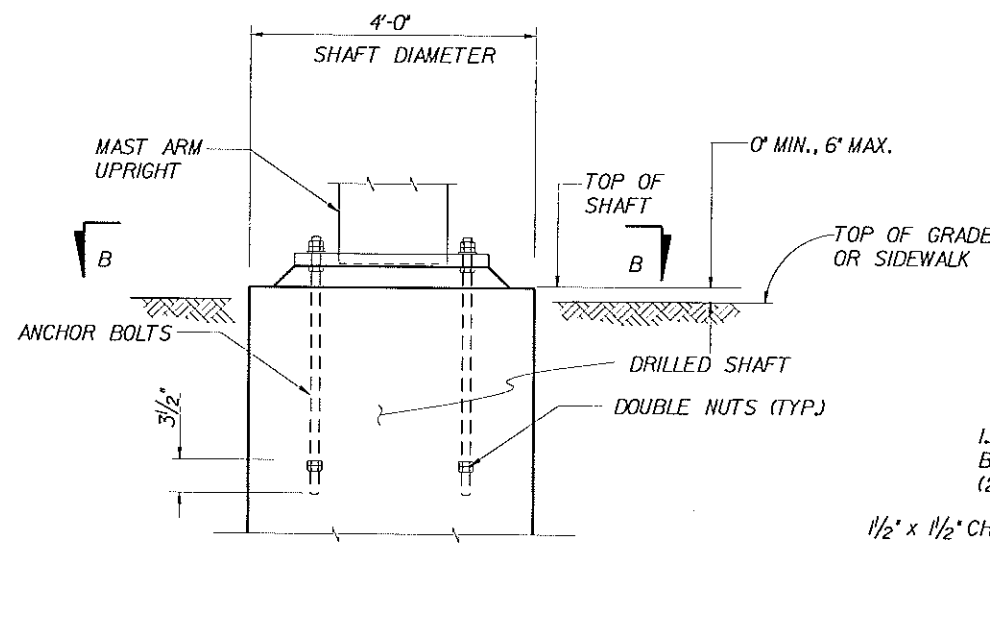


SECTION A-A

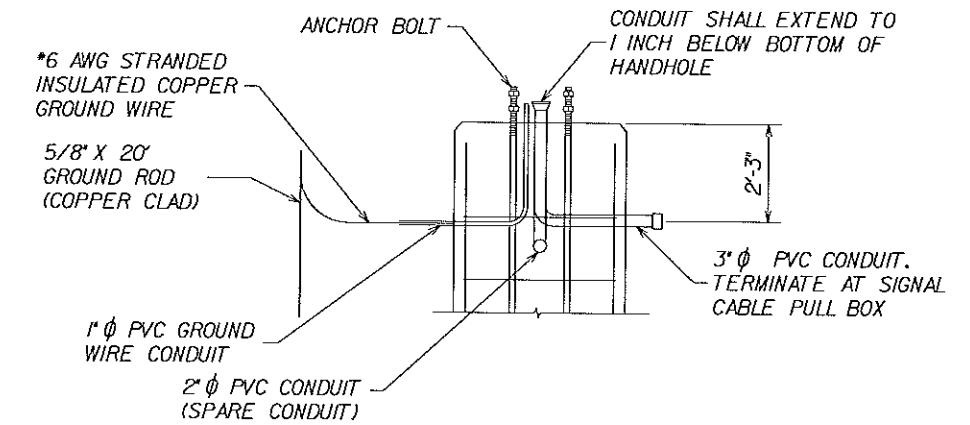


SECTION B-B

NOTE: CONCRETE AND REINFORCEMENT NOT SHOWN

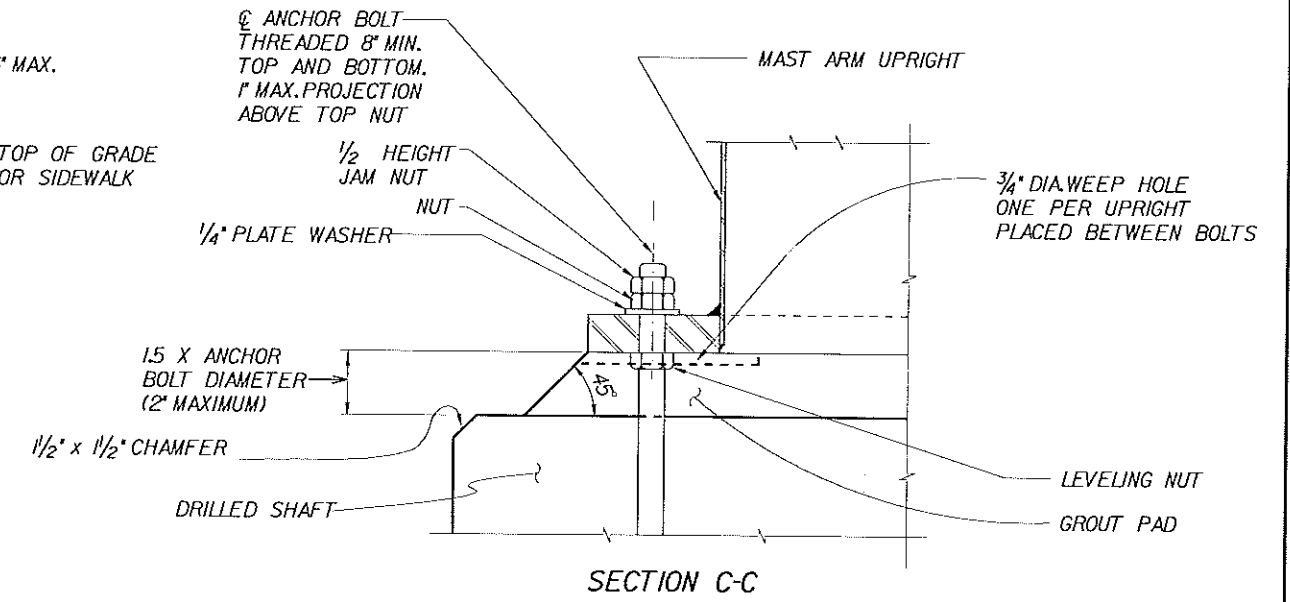


BASE PLATE AND ANCHORAGE ELEVATION



ELEVATION

FOUNDATION CONDUIT DETAIL



SECTION C-C

REVISIONS		
DATE	BY	DESCRIPTION

ENGINEER OF RECORD:
M. DAVID FINLEY, P.E.
PROFESSIONAL ENGINEER CERTIFICATE NO. 40119
PEGASUS ENGINEERING, LLC.
301 WEST STATE ROAD 434, SUITE 309
WINTER SPRINGS, FLORIDA 32708
CERTIFICATE OF AUTHORIZATION NO. 27770



CITY OF WINTER SPRINGS
FLORIDA

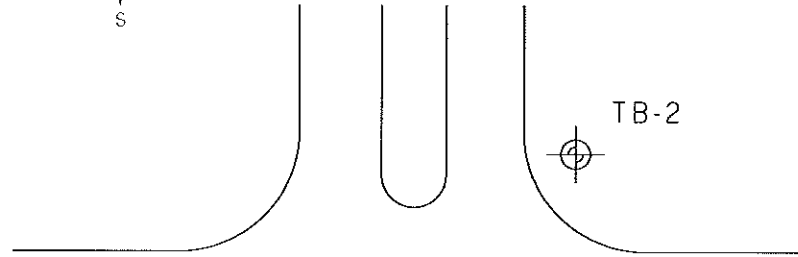
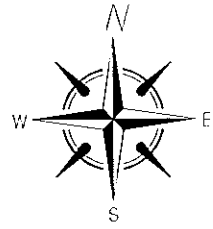
ROAD NO.	PROJECT NO.
SR 434	WSC-006-1



SR 434 AND VISTAWILLA DRIVE
INTERSECTION IMPROVEMENTS
FOUNDATION DETAILS

SHEET NO.
13

2/12/2009 3:02:08 PM



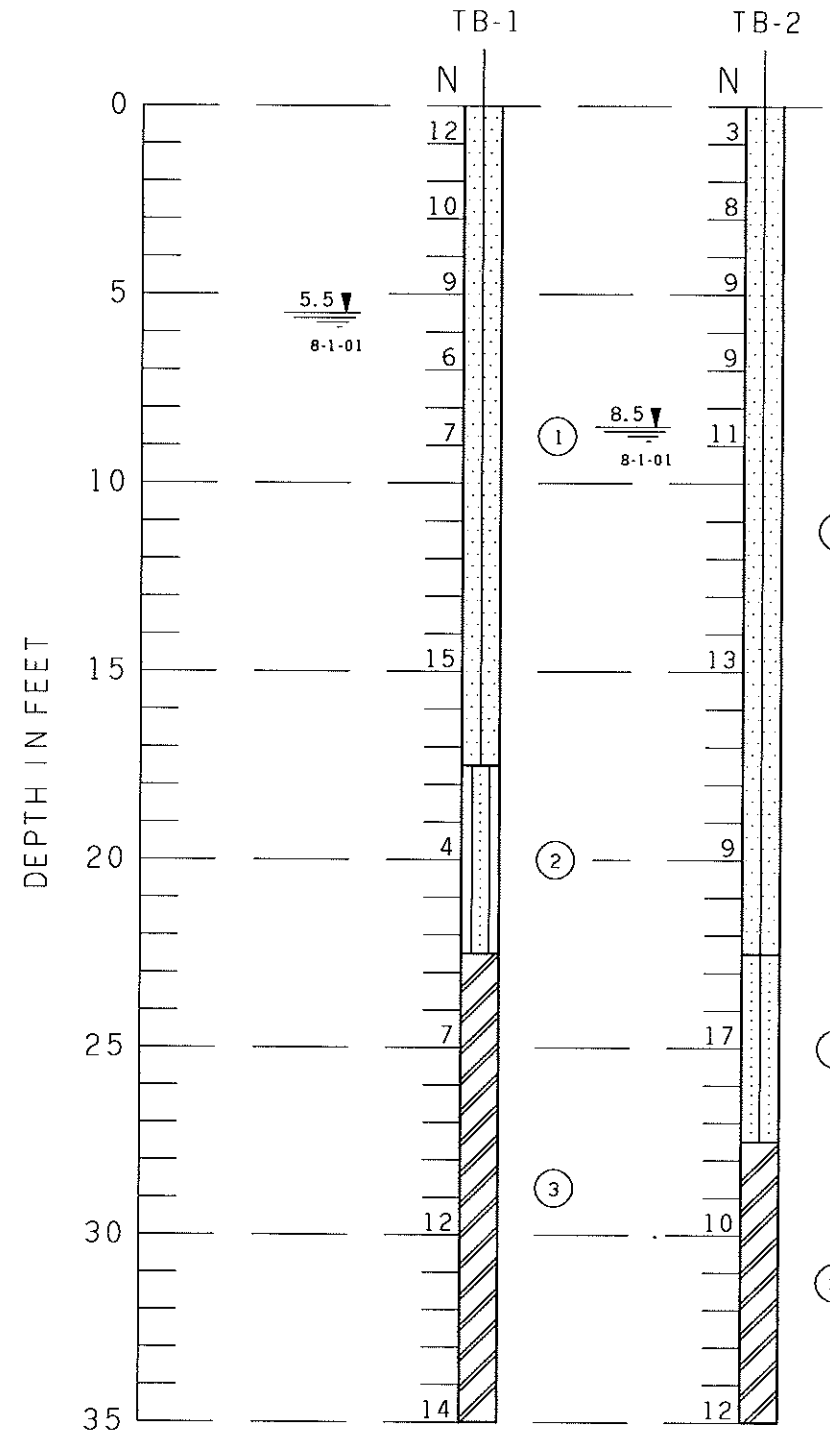
S.R. 434

VISTAWILLA DR.

TB-1

TB-2

LOCATION PLAN



LEGEND

- ① LIGHT GRAY-BROWN TO DARK BROWN FINE SAND TO SLIGHTLY SILTY FINE SAND, (SP), (SP-SM)
- ② LIGHT GRAY SILTY FINE SAND, (SM)
- ③ DARK GREEN-GRAY CLAY, TRACE SHELL, (CH)
- ④ LIGHT GRAY SLIGHTLY SILTY FINE SAND MOSTLY CEMENTED SANDS, (SP-SM)
- (SP) UNIFIED SOIL CLASSIFICATION GROUP SYMBOL
- 8.5 ▼ 8-1-01 DEPTH TO GROUNDWATER LEVEL IN FEET WITH DATE OF READING
- N STANDARD PENETRATION RESISTANCE IN BLOWS PER FOOT
- ⊕ APPROXIMATE LOCATION OF STANDARD PENETRATION TEST BORING

SOIL PROFILES
SCALE: 1"=5'

REVISIONS		
DATE	BY	DESCRIPTION

ENGINEER OF RECORD,
ROBERT TROMPKE, P.E.
PROFESSIONAL ENGINEER CERTIFICATE NO. 55456
PROFESSIONAL SERVICE INDUSTRIES, INC.
1748 33RD STREET
ORLANDO, FLORIDA 32839
(407) 304-5560



CITY OF WINTER SPRINGS
FLORIDA

ROAD NO.	PROJECT NO.
SR 434	WSC-006-1



SR 434 AND VISTAWILLA DRIVE
INTERSECTION IMPROVEMENTS
SOIL BORINGS

SHEET NO.
14