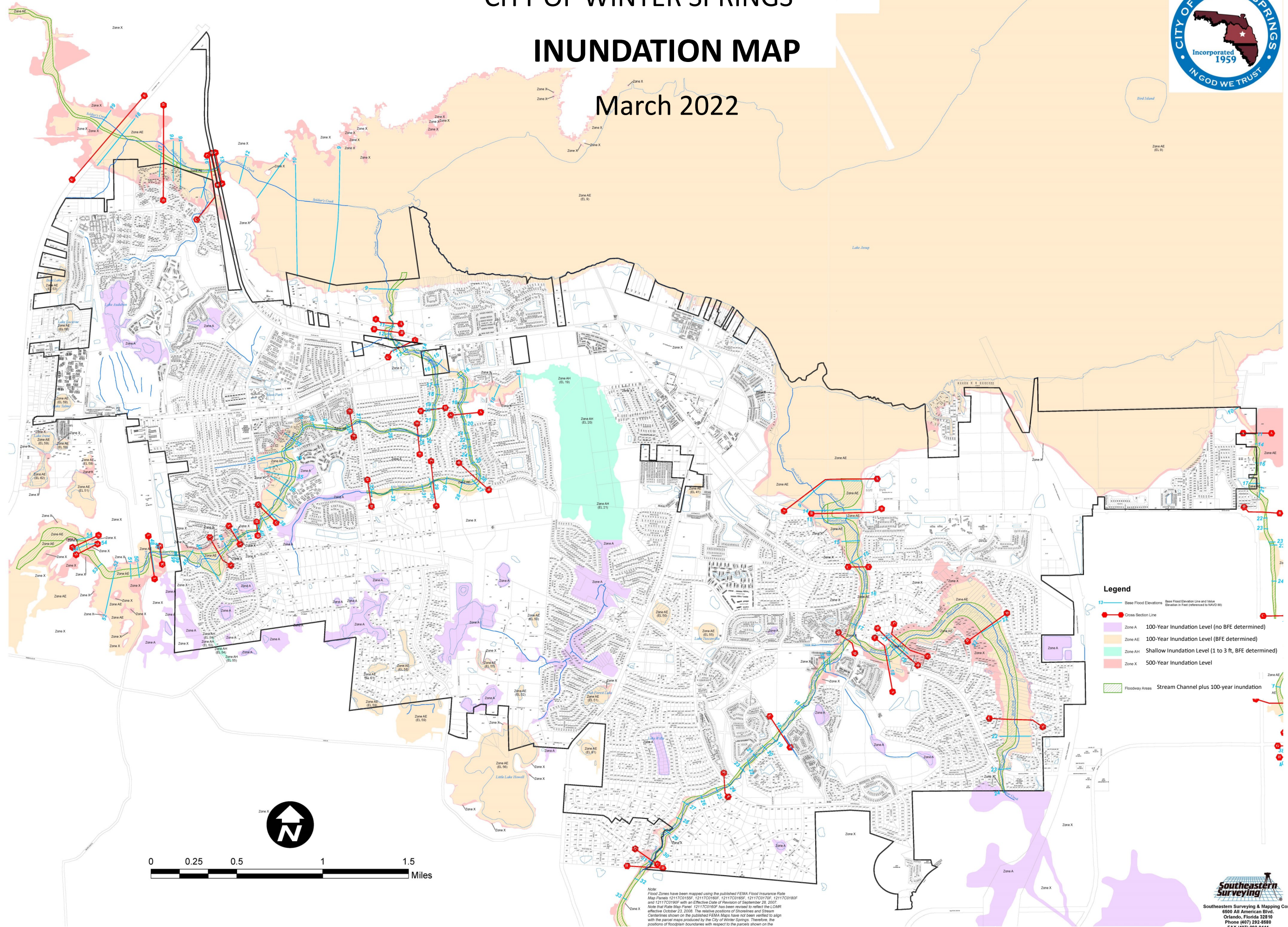
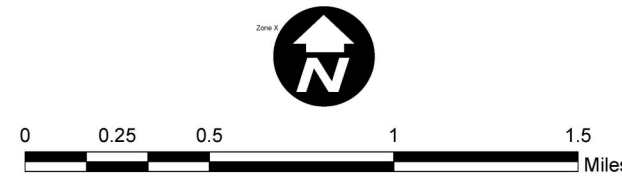


CITY OF WINTER SPRINGS INUNDATION MAP

March 2022



- Legend**
- Base Flood Elevations (Base Flood Elevation Line and Value Elevation in Feet referenced to NAVD 83)
 - Cross Section Line
 - Zone A 100-Year Inundation Level (no BFE determined)
 - Zone AE 100-Year Inundation Level (BFE determined)
 - Zone AH Shallow Inundation Level (1 to 3 ft, BFE determined)
 - Zone X 500-Year Inundation Level
 - Floodway Areas Stream Channel plus 100-year inundation



Note: Flood Zones have been mapped using the published FEMA Flood Insurance Risk Map Panels 12117C01850F, 12117C01860F, 12117C01870F, 12117C01880F, 12117C01890F and 12117C01900F with an Effective Date of Revision of September 28, 2007. Note that State Map Panel 12117C01860F has been removed to reflect the LOMR effective October 23, 2008. The relative positions of Shorelines and Stream Centerlines shown on the published FEMA Maps have not been verified to align with the parcel maps produced by the City of Winter Springs. Therefore, the positions of floodplain boundaries with respect to the parcels shown on the City Map are subject to interpretation and should not be considered final without further Engineering Analysis.

